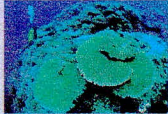




## Highlights

ISO 14000:  
The Way Forward

1



Marine Water Quality  
At Tioman Island

4



Pembangunan Lawan  
Impak Sosial:  
Siapa Menang?

7

Sambutan Jubli Perak  
Penubuhan Jabatan Alam  
Sekitar

10

Calendar of  
Events

11

*Advisor :*

Pn. Hj. Rosnani Ibarahim

*Chief Editor :*

Pn. Pauziah Hanum Hj. Abdul Ghani

*Editors :*

En. Amirul Aripin

En. Mohd Ismazi Effendy Muda

Pn. Norazian Abd. Hamid

En. Abd. Aziz Parmin

En. Mohd. Rashdan Topa

En. Mohd. Nazry Radzaly

En. Mior Izzuddin Baharuddin

*Design/Printing :*

Sasyaz Holdings Sdn Bhd

*Article Contribution :*

Contribution can be channelled to :-

E-mail : mib@jas.sains.my

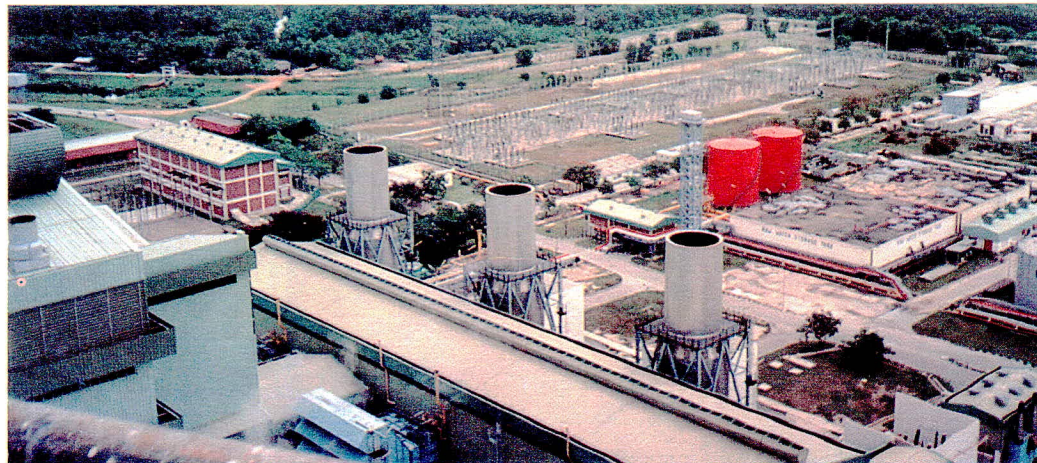
ptg@jas.sains.my


Fax : 03 - 293 1480

## ISO 14000:

Hajah Wan Ramlah Wan  
Ibrahim  
Department of Environment

# The Way Forward



 **ISO 14000** is an evolving series of generic standards developed by ISO to provide organisations with guidance on how to manage, measure, improve and communicate the environmental aspects of their operations in a systematic way. The standards include a broad range of environmental related disciplines:

- ✓ the basic environmental management system (EMS);
- ✓ environmental auditing (EA) criteria for use by both internal and third-party auditors;
- ✓ environmental labelling (EL) criteria;
- ✓ criteria for doing an environmental performance evaluation (EPE);
- ✓ life-cycle assessment (LCA) methodologies; and
- ✓ environmental aspects in product standards (EAPs).

ISO 14000 is seen as a very significant development and exerts tremendous influence at various levels; the company level, the industry level and the country level:

- (i) At the company level, it affects the ways in which an organisation conducts dealings with its suppliers, contractors, customers, bankers, creditors, and other parties. It affects the ways in which the company operates and manages internal procedures.



## FROM THE DG'S DESK



**E**nvironmental issues are becoming more complex. In the past, pollution are largely due to agro-based industry, but today a new set of environmental problems are confronting us, these include thinning of the ozone layer, toxic and hazardous waste management, global warming and even genetically modified organisms (GMO's) are now being widely debated.

Environmental management has now become one of the highest priorities in doing business. Industries should not have this misconception that environmental management system do not concern them and leave it to the government to handle it. Industries must integrate environmental factors into industrial operations to achieve compliance with acceptable environmental standards and minimizing adverse impact on the environment.

International Organisation for Standardization (ISO) designated ISO 14000 as the series that provide organisation with proper and appropriate environmental management

system to reduce risk and improved on the bottom line. ISO 14000 series are voluntary environmental standards which will influences the design, manufacture and marketing of products, the selection of raw materials, the type of environmental data that are gathered and how these data are communicated.

Department of Environment has given our full and continuous support and participation for the implementation of ISO 14000 in Malaysia. Towards this end, DOE would like to encourage companies to be self-regulating, strive in implementing environmental performance evaluation and recognition for ISO 14000 as a means of achieving environment protection.

Adopting ISO 14000 series, means industries would not only comply with environmental legislation in an efficient and systematic manner but would improve their organisations' profitability through better use of resources and reduction in waste generation. In terms of trade, industries would be ensured of better acceptability in export markets and be more competitive in penetrating new markets. It is indeed prudent that industries should constantly check, understand and overcome the various internal and external issues faced in order to remain competitive in global market.

**HAJAH ROSNANI IBARAHIM**  
Director-General of  
Environment Malaysia



Continue from page 1

- (ii) Production processes, use of materials, management practices, and employee relationship can all be affected; At the industry level, ISO 14000 exerts great pressure on industrial or business sectors that cannot meet the environmental standards. ISO 14000 can also produce opportunities for the creation of new industries that can conform to higher environmental expectations. Using the phasing out of CFCs as an example, it can be easily understood that an entire industrial sector in this case, producers of CFCs can be swept away if it is incompatible with the environment. Accompanying the demise of the CFC production sector is the emergence of an industry involved in the production of CFC substitutes and alternatives. CFC production workers have much to complain about, such as perceived severity and unreasonableness of environmental pressure, workers in the rising new industry will undoubtedly herald the correctness and wisdom of environmental management. ISO 14000 prompts people to look more deeply into the environmental reasonableness of individual companies as well as groups of companies of the same type. It does not do this in a single step, but facilitates the examination process by providing a more effective and systematic tool to carry out the examination. It becomes easier to identify environmentally unsound industries, which may be driven out of business at a pace proportional to the extent of harm they do to the environment; and
- (iii) At the country level, ISO 14000 can affect international trade. In recent years we have seen how certain companies had exerted influence on their business partners because of environmental considerations. This happened in the absence of any international standards. ISO 14000 makes it much easier for companies to exert their influence in the future. If a country is slow to follow ISO 14000, it seems highly possible that business firms within that country will find it increasingly difficult to do business in other countries. The country's competitiveness may drop, and it may find itself in the awkward position of having its business opportunities snatched away by other countries that are better prepared for the adoption of ISO 14000.

Some people are highly suspicious of ISO 14000. Is all the discussion about environmental management simply a ploy to create non-tariff, environmental trade barriers that will enable

developed countries to maintain their competitive edge? The World Trade Organization (WTO) recognizes that environmental related practices and environmental terms/symbols can be potential trade barriers. ISO 14000 drafters strongly deny that this is the case and emphasize that the standard should not be used to create non-tariff trade barriers. However, it would be exceedingly difficult, if not impossible, to prove or disprove the presence of such an intention. From a pragmatic viewpoint it does not serve any useful purpose to argue whether countries are exploiting concern for the environment to create non-tariff barriers. It is important to recognise that ISO 14000 has become a reality, regardless of whether one likes it or not. It is also important to appreciate the great significance of this new series of standards and to implement them.

With or without the trade implications of ISO 14000 series of standards, industries must realise the need to minimize adverse environmental impacts of production and consumption patterns. Good environmental management practices, including pollution prevention and waste minimization, are good for business. Pollution prevention and waste minimization make business operations more financially efficient and minimize exposure to costly environmental liabilities. In the past, it was enough that companies conform to acceptable standards set by the regulatory agencies during the manufacturing process. Environmental responsibility for most companies simply meant end-of-pipe treatment. However, given the increasing requirements of the growing environment-conscious markets and public awareness, industries must integrate environmental factors into industrial operations to achieve compliance with acceptable environmental standards and minimizing adverse impact on the environment. They owe a moral responsibility to local users and consumers that their products are produced in an environmentally sound and sustainable manner.

Corporate responsibility is the key to build an environmentally and economically sustainable global trading system. Responsible corporations must therefore look into adopting environment friendly production and process methods in their industrial operations. It is therefore important that the local manufacturing sector gears itself to meet this challenge in doing business and hence be at a competitive advantage vis-a-vis other countries when exporting to Europe and other developed countries.

Corporate managers will be the frontline people fighting

Continue on page 6



# MARINE WATER QUALITY AT TIOMAN ISLAND



## INTRODUCTION

 Tourism is becoming a major industry in Malaysia, bringing development, employment, revenue and foreign exchange. It has been reported that the tourism industry since its promotion through the Visit Malaysia Year in 1990 had resulted in significant increase in the number of tourist arrivals and their total expenditure.

The rapid growth in tourism industries not only require the provision of better infrastructures and facilities but also demand the need to ensure the sustainability of the industries through better management and protection of the environment and the establishment of a sound eco-tourism industry. Because of the importance of Tioman as a popular

diving and snorkeling spot with its diverse coral and marine life, this has underscored the need for its environment to be protected and the marine resources be preserved.

## CURRENT COASTAL AND ISLAND MONITORING IN MALAYSIA

A national programme on coastal water monitoring network has been established for Peninsular Malaysia since 1978 and that for Sabah and Sarawak since 1985. To date there are 185 coastal monitoring stations along the coastal areas of Peninsular Malaysia, 31 in Sabah and 19 in Sarawak. The locations of these stations were determined based mainly on the beneficial uses of the coastal

Zamsari Mohd Din  
Department of Environment

waters especially for recreational purposes. This national programme on coastal water monitoring has been conducted by the Department of Environment (DOE) with the following objectives;

- u To determine the quality of water, in its natural state and various influence that effect its quality;
- u To assess the impact of human activities upon the quality of the water and its suitability for the various uses;
- u To detect and keep under observation the sources and pathways of specified pollutants; and,



- u To detect trends in water quality and assess the effectiveness of pollution control measure.

### **WATER QUALITY AT TIOMAN ISLAND**

Tioman is one of the beautiful island in Malaysia and its marine environment is rich in corals and marine life, with splendid beaches such as Pantai Salang, Kg. Tekek and Batang Air. In fact Tioman, which has been heralded as one of the most beautiful islands in the world, is the largest island off the East Coast of Peninsular Malaysia with an area about 13,420 hectares with 38 km in length and 19 km at its greatest width. Tioman has a coastline of 69 km long with 29 km comprising the sandy beaches. The island is still much covered with primary forest. Based on the 1995 census, the island has a resident population of 2,160 and are mainly found at Kg. Tekek in the west coast and Kg. Juara in the east coast.

### **Tioman Marine Monitoring**

The study of Tioman marine water quality was carried out between 1998 and 1999 through the Small Island Hydrological Study. The hydrological study encompass the scope of determining the water quality aspect of marine, surface and groundwater. The study focus on the following objectives;

- a) To monitor and protect areas identified to be of importance to the country, such as recreational sites, fishing activities and gazetted marine parks.
- b) To monitor changes in the marine water quality as a result of marine activities such as navigation, petroleum, fishing and tourism.
- c) To provide marine guidelines for

impact of development or human being activities to marine environment.

The DOE has undertaken the task to monitor and establish the status of marine water quality surrounding Tioman Island under this project.

The selection of parameters under this study is largely determined by the objectives of the overall programme and taking into consideration financial, equipment and personnel availability. Parameters of physical characteristic such as Dissolved Oxygen (DO), Conductivity, Salinity, Temperature, and pH were included, while the biological parameters involved E.coli and Faecal coliform. The chemical parameters include cadmium, total chromium, mercury, lead, arsenic and copper.

### **Status of Marine Water Quality at Tioman**

Based on the sampling results, oil and grease (OG) were detected at levels of more than 1 mg/l. The presence of oil and grease at the coastal areas are attributed to sea-based sources particularly the shipping activities.

The Total Suspended Solids (TSS) levels at all stations in Tioman Island were considerably high ranging between 285 mg/l to 607 mg/l. The high levels of TSS indicated that the coastal waters had been affected by the rapid earthworks activities rising from the various development activities on the island.

Most of the heavy metals are in compliance with the existing standard except lead which was found to exceed the standard of 0.1 mg/l for lead.

Analysis for the Faecal coliform and Escherichia coli in the coastal waters of Tioman indicates that the islands was

slightly affected by the discharge from household drains and domestic sewage.

The land-based sources of marine pollution identified include:

- The construction activities for resorts and accommodation facilities and associated infrastructure which lead to siltation and sedimentation.
- Inadequate sewage and solid waste disposal facilities; and
- Recreation-related facilities such as boats, which can lead to oil and grease pollution and golf courses which resulted in high nutrient runoff originating from fertilizer and synthetic organic chemicals application.

The resulting impact of unchecked discharges and development activities can include the following:

- Sedimentation
- Eutrophication
- Harm to marine and coastal ecosystems and living resources
- Deteriorating water quality
- Human health effects
- Impairment of recreation activities

The sea-based of marine pollution originated from vessels, offshore activities and coastal related activities in the area.

Pollution from vessels could be in the form of discharges resulted from the normal ship operations such as deballasting, tank cleaning, bilges water from passing ships in the South China Sea and arising from activities of bunkering and cargo loading and unloading which could result in oil spills. Whilst those from offshore operational activities such as domestic wastewater discharges and disposal of garbage can contribute to the pollution of seas.



## Mitigating Measures To Protect The Environment

The overall strategies of the Department of Environment for effectively managing the Marine water quality can be grouped into four major activities :

### u Monitoring

The Department of Environment will continue with its monitoring activities at the island and along the national coastal waters to ensure that improvement in marine water quality are maintained. Under the 8th Malaysia Plan, the Department will developed its national marine water quality criteria and standard and will be used as the basis for comparison with the measured ambient quality so that strategic location could be preserve and its environment be protected.

### u Enforcement

It has been established that causes of major concern is related to problem arising from construction activities which contributed to siltation and sedimentation. Control on earthwork through stricter enforcement of the earthwork by-laws is expected to lessen the problem and thereby help to improve the environmental quality. The measures identified under the provisions of other legislation would require close monitoring by the respective enforcement agencies to ensure full compliance.

### u Prevention

Since this is a marine parks therefore projects proponents intending to carried out project on the island will have to conduct EIA study and formulate adequate mitigating measure in lined with the requirement under section 34A of the

Environment Quality Act (EQA) 1974 and Environment Quality (Prescribed Activities) (Environment Impact Assessment) Order 1987.

### u Development

Education and public awareness will encourage the citizens and visitors to contribute in maintaining a clean and conducive environment. This is one of the main strategy of the DOE to enhance public participation in attaining the desired objective of non polluting.

## CONCLUSION

In general, the coastal waters off the beaches in Tioman Island are still considered safe for the purpose of recreational activities including swimming, diving, snorkeling, boating and canoeing. This will ensure the continued popularity of the island as a tourist attraction center.

### Continue from page 3

for the ISO 14001 certification cause. They must be familiar with the requirements of the standards and fully appreciate all their implications. After corporate managers have clearly understood ISO 14001 requirements, they must make a decision: Do their organisations need ISO 14001? If the answer is affirmative, corporate managers must motivate and lead their employees into the ISO 14001 process, demonstrate their full commitment, and act as mentors.

It is quite evident, that ISO 14000 series of environmental management standards has gained wide recognition in the global business community and have a monumental impact on worldwide efforts and strategies

to protect the environment. It does not serve any useful purpose here to debate whether the motive of the standards is to create non-tariff barriers or to protect the environment. It is far more productive to focus our efforts in preparing for the changes resulting from the standards. Corporate managers and policymakers in government ministries, NGOs, and trade associations must take heed of the new standards and prepare to respond to their impacts. ISO 14000 is a continual improvement process requiring commitment. Investment will be necessary during the ISO 14000 process, but it will pay off. Companies that are successful in implementing ISO 14000 will find that their commitment and investment in this programme will improve their

environmental performance, and they will reap tangible benefits and achieve green productivity.

Implementing ISO 14001 is a journey, and putting all required elements of the standards in place is only the beginning. Commitments to pollution prevention, continual improvement, and compliance with legal requirements are ongoing. As environmental objectives and targets are achieved, new ones are set. As employees become better aware of the consequences of their actions upon the environment, accidents decrease and performance increases. The journey that uses the ISO 14001 standards as its navigational compass will ultimately benefit the organisation, earth and humanity.



# Pembangunan Lawan Impak Sosial: Siapa Menang?

Rohimah Ayub  
Jabatan Alam Sekitar

## PENGENALAN

Elbagai jenis projek pembangunan telah dan sedang dimajukan di negara kita dalam mencapai Wawasan 2020 yang hanya tinggal 20 tahun lagi. Di antara jenis-jenis projek tersebut adalah infrastruktur, perumahan, pertanian, perindustrian, rekreasi dan termasuk juga projek tambak laut yang telah dilaksanakan semenjak Wawasan 2020 dilancarkan.

Kadangkala pemaju projek pembangunan lupa kepada tanggungjawab mereka terhadap hak alam sekitar. Hinggalah pada Persidangan Alam Sekitar dan Pembangunan di Rio De Janeiro, Brazil pada tahun 1992, Agenda 21 diwujudkan dan Malaysia telah menandatangani untuk bersama-sama negara lain menggunakan konsep pembangunan mapan dalam perancangan dan pelaksanaan pembangunan negara.

## DASAR PEMBANGUNAN NEGARA

Ramai yang tahu tentang konsep pembangunan mapan tetapi tiada definisi yang tepat. Definisi yang selalu digunapakai adalah dari Brundtland Commission iaitu *'development that meets the needs of the present without compromising the ability of future generations to meet their needs'*.

Dasar Alam Sekitar Negara diwujudkan, bertujuan untuk menuju ke arah kemajuan ekonomi sosial dan budaya Malaysia yang berterusan, serta

peningkatan mutu kehidupan rakyat melalui pembangunan mapan. Wawasan Jabatan Alam Sekitar juga selari dengan Agenda 21 dan Dasar Alam Sekitar Negara, iaitu untuk memastikan keunikan, kepelbagaian dan kualiti alam sekitar dikekalkan bagi menjamin kesihatan dan kesejahteraan, keselamatan dan kesejahteraan hidup pada masa kini dan masa akan datang.

## PENDEKATAN JAS

Jabatan Alam Sekitar (JAS) telah diberi mandat dan amanat untuk melaksanakan konsep pembangunan mapan. Sehubungan dengan itu, JAS telah menggariskan beberapa strategi pengurusan alam sekitar dalam merealisasikan konsep pembangunan mapan dalam pelaksanaan projek pembangunan. Strategi tersebut boleh dibahagikan kepada lima (5) bahagian iaitu perancangan, penilaian, pengawalan, pengawasan dan pendidikan.

Di dalam strategi perancangan, beberapa pindaan telah dibuat dalam Akta Kualiti Alam Sekeliling 1974 selaras dengan kehendak konsep pembangunan mapan, penglibatan Jabatan dalam perancangan kegunaan tanah di semua peringkat pentadbiran Kerajaan dan menyediakan garispanduan-garispanduan sebagai panduan dalam perancangan projek-projek. Manakala di dalam strategi penilaian, penilaian ke atas kesan-kesan alam sekitar mesti dilaksanakan di peringkat kajian kemungkinan hingga pelaksanaan. Ianya melalui penilaian awal

kesan kepada alam sekeliling (EIA) dan penilaian awal tapak (PAT) bagi projek yang tidak tertakluk di bawah EIA.

Di dalam strategi pengawalan dan pengawasan, program-program dirancang dengan menggunakan Konsep 3S iaitu strategik, setempat dan serentak. Pendidikan adalah satu strategi yang mengambil jangka masa panjang untuk meningkatkan tahap kesedaran masyarakat. Beberapa program telah dirancang untuk mendidik dan menyebarkan maklumat alam sekitar kepada segenap lapisan masyarakat termasuk generasi baru seperti iklan di televisyen, dokumentari, kem kesedaran alam sekitar, minggu alam sekitar, poster-poster dan risalah-risalah.

## CORAK PELAKSANAAN PROJEK

Bagi projek-projek yang tertakluk di bawah Perintah Kualiti Alam Sekeliling (Aktiviti Yang Ditetapkan) (Penilaian Kesan Kepada Alam Sekeliling) 1987, kelulusan laporan diberikan dengan bersyarat. Tetapi ada sebahagian syarat tidak dapat diperincikan dan di luar bidang kuasa JAS, sebagai contoh isu prosedur pelaksanaan penempatan semula (resettlement action plan (RAP)) penduduk kampung/pribumi/Orang Asli yang terlibat serta bentuk dan nilai pampasan yang diterima mereka. Kesan kepada sosio-ekonomi mereka selepas perpindahan tidak di pantau untuk satu jangkamasa tertentu.

Kadangkala pemaju mengambil sikap mudah dengan hanya mementingkan



pelaksanaan projek walaupun pampasan dan perpindahan telah dipersetujui. Keadaan persekitaran tempat perpindahan baru kadangkala tidak meningkatkan mutu kehidupan golongan yang di pindahkan ini kerana tidak serasi dengan kemahiran mereka. Contohnya, kaum nelayan di pindahkan di tempat yang jauh dari persisiran pantai atau kumpulan Orang Asli dipindahkan jauh daripada kawasan hutan yang produktif. Mereka susah hendak menerima perubahan secara mendadak. Ianya menjadi satu kejutan budaya kepada mereka. Mencari peluang pekerjaan lain dengan taraf pendidikan yang rendah atau tiada langsung serta faktor usia, peluang pekerjaan susah hendak diperolehi. Golongan tua mengharapkan golongan muda untuk menyara mereka meneruskan sisa-sisa kehidupan.

Golongan muda menggunakan tenaga mereka memandangkan pendidikan mereka masih rendah atau tiada langsung. Mereka keluar mencari

pekerjaan di penempatan berdekatan. Corak hidup, adat resam atau kebudayaan mereka hilang sedikit demi sedikit apabila golongan muda balik ke penempatan mereka dengan corak kehidupan dan kebudayaan luar atau asing. Kadang-kadang golongan ini juga terdedah kepada masalah sosial seperti menagih dadah dan jenayah.

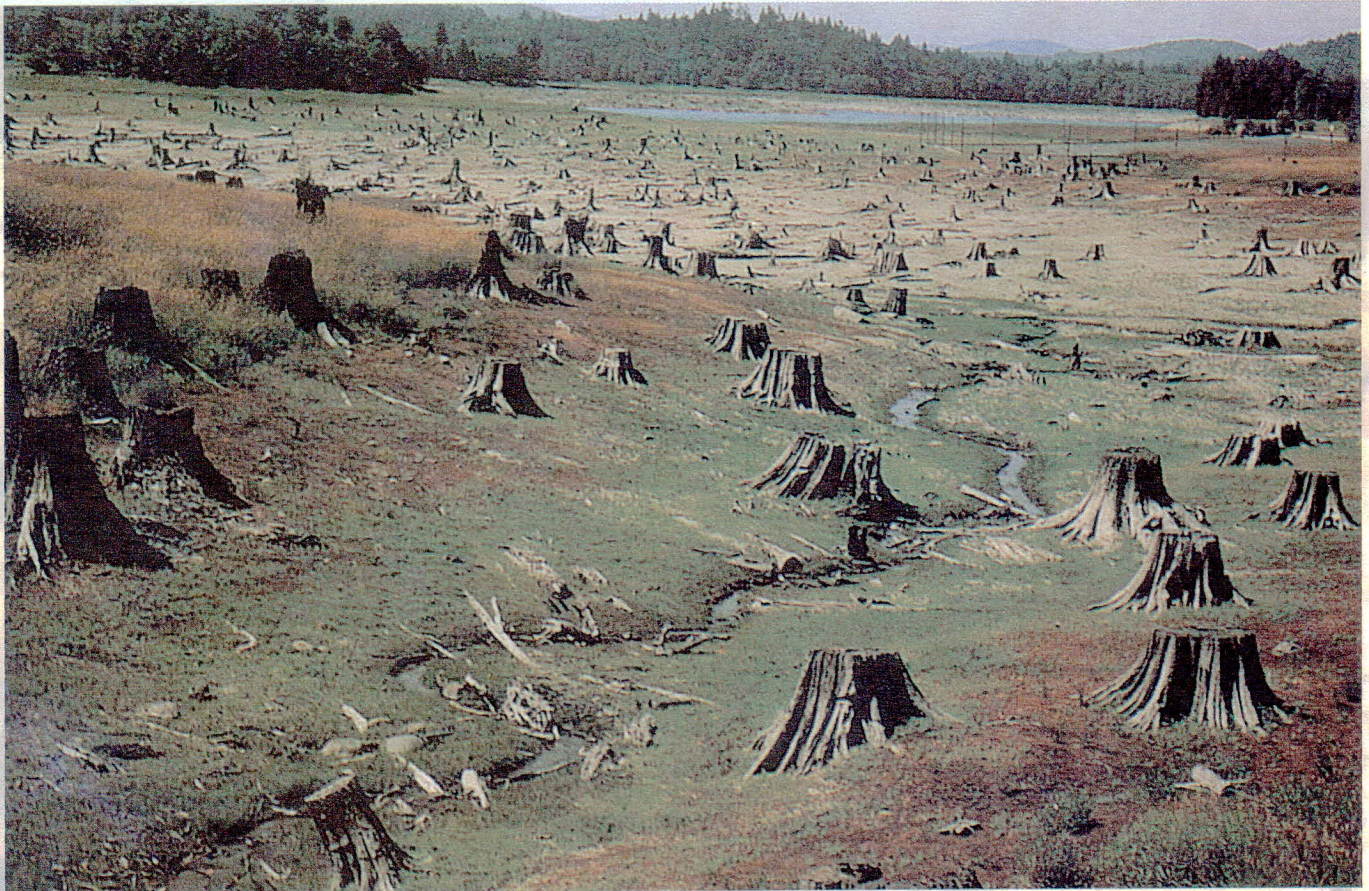
#### **SYOR PENYELESAIAN**

Kesan-kesan ini adalah di antara yang telah di kenalpasti hasil dari penyelidikan pihak institusi pengajian tinggi. Keadaan ini tidak bertepatan dengan konsep pembangunan mapan dan Dasar Alam Sekitar Negara.

Jika kita lihat pelaksanaan projek-projek di Thailand yang ditaja oleh Raja Bumibhol Adulyadej, ianya telah dilaksanakan mengikut konsep pembangunan mapan walaupun sebelum Agenda 21 ditangani. Dalam pelaksanaan itu, beberapa perkara telah digariskan di dalam buku bertajuk 'Sustainable

Development of Natural Resources: A Study of the Concepts and Application of His Majesty the King of Thailand by UNEP Dec 1988' seperti berikut:

- *'a balance between population needs and environment by maximizing the use of resources wherever this is possible without negative environmental consequences.*
- *The involvement of the people in the creation of a sustainable framework of development.*
- *Importance of consulting local people and understanding their needs and problems can be clearly seen as a principle used by the King to emphasize that any efforts at conservation should not only bear those needs in mind, but also where possible, directly benefit those affected by the conservation effort.*
- *Natural resources and the environment are prudently protected and managed to provide continuous benefits to increase the standards of*



*living and quality of life of the people.*

Pihak yang terlibat dalam satu-satu pembangunan hendaklah prihatin terhadap isu impak sosial ekonomi jika konsep pembangunan mapan hendak dicapai. Kehilangan flora dan fauna masih boleh diganti dengan adanya kawasan yang diwartakan sebagai Taman Negara atau Hutan Simpan dan dengan adanya kejuruteraan bioteknologi tetapi kepupusan kaum, budaya, corak hidup dan sumber ekonomi susah untuk di cari ganti.

Sekiranya masyarakat terlibat perlu dipindahkan, pindahkanlah mereka

di kawasan yang mempunyai keadaan yang hampir sama dengan kampung halaman mereka supaya mereka tetap menjadi masyarakat yang produktif dengan kemahiran yang sedia ada pada mereka. Proses penyesuaian dengan keadaan baru juga memakan masa dan ini perlu juga di ambilkira bagi menjanakan masyarakat yang produktif. Contohnya, jika pertanian adalah kerja utama mereka , kawasan yang sesuai dengan pertanian hendaklah diberikan dan projek-projek berkaitan pertanian hendaklah dilaksanakan sebelum perpindahan masyarakat tersebut supaya bila duit pampasan habis, hasil pertanian dapat membantu mereka

untuk meneruskan kehidupan mereka secara berdikari.

### KESIMPULAN

Pihak-pihak yang terlibat tidak harus mengambil sikap sambil lewa dan lepas tangan dalam isu impak sosial. Ianya telah menjadi amanah dan tanggungjawab negara untuk mengotakan apa yang dikata apabila menandatangani Agenda 21.

Dalam konsep pembangunan mapan, sepatutnya pembangunan lawan impak sosial, kedua-duanya menang. Semoga negara kita akan dapat mencapai Wawasan 2020 tanpa mengabaikan ekosistem yang pelbagai dan unik.

#### Rujukan:

1. Sustainable Development ant the Environment-Concept and Reality by Hasmah Harun & Abu Bakar Jaafar. Paper prepared for the National Workshop on Environmental Planning and Management 11-13 Dec 1990.
2. The Environment A Gift Of God, IKIM & DOE 1999
3. Sustainable Development of Natural Resources: A Study of the Concepts and Applications of His Majesty the King of Thailand, UNEP Dec 1988
4. Environmental Policies & Strategies for Sustainable Development:An Outline by Abu Bakar Jaafar, DOE, 11 Dec 1990
5. Kursus Penilaian Impak Sosial anjuran JAS, 21 – 26 Mei 2000.



# SAMBUTAN JUBLI PERAK PENUBUHAN JABATAN ALAM SEKITAR

Mohd Ismazi Effendy Bin Muda  
(Petikan dari Buku Cenderamata)



Jabatan Alam Sekitar yang ditubuhkan dalam tahun 1975, telah melalui pelbagai perubahan samada dari segi struktur organisasi mahupun strategi dan skop serta bidang kerja yang dijalankan. Kini Jabatan Alam Sekitar yang berusia 25 tahun terus maju memikul tanggungjawabnya sebagai sebuah agensi kerajaan yang memperjuangkan kesejahteraan alam sekitar demi keselesaan orang ramai dan menjamin keberterusan pembangunan negara.

## PROFIL

Awal tahun tujuh puluhan adalah permulaan pengurusan alam sekitar di negara ini secara lebih bersepadu. Persidangan Pertubuhan Bangsa-Bangsa Bersatu mengenai Manusia dan Alam Sekitar yang berlangsung di Stockholm pada tahun 1972 turut mempengaruhi dan memberi kesedaran kepada negara kita untuk menubuhkan satu agensi bagi menguruskan hal-hal berkaitan dengan alam sekitar.

Pada tahun 1974, kerajaan telah merangka dan meluluskan satu undang-undang khusus yang dinamakan Akta Kualiti Alam Sekeliling untuk menangani masalah pencemaran dan

memperbaiki mutu alam sekitar di negara ini. Akta ini telah diwartakan pada 14 Mac 1974 dan mula dikuatkuasakan pada 15 April 1975, dengan pelaksanaan dan pentadbirannya diletak di bawah Bahagian Perancang Am, Jabatan Perdana Menteri. Bahagian Alam Sekitar telah ditubuhkan pada 15 September 1975 di bawah Kementerian Kerajaan Tempatan dan Alam Sekitar khusus untuk melaksanakan kuasa yang termaktub di bawah Akta tersebut. Bahagian Alam Sekitar telah kemudiannya dipindahkan ke Kementerian Sains, Teknologi dan Alam Sekitar dalam bulan April 1976 dan pada 1 September 1983 telah dinaikkan taraf kepada sebuah Jabatan sepenuhnya.

Objektif utama Jabatan Alam Sekitar ditubuhkan adalah untuk memastikan keunikan, kepelbagaian dan kualiti alam sekitar dikekalkan bagi menjamin kesihatan, kesejahteraan, keselamatan dan keselesaan hidup rakyat pada masa kini dan akan datang.

Misi Jabatan Alam Sekitar adalah untuk mempromosi, meningkatkan dan meneruskan pengurusan alam sekitar yang baik dalam proses pembangunan negara.



Visi Jabatan Alam Sekitar adalah untuk memastikan keunikan, kepelbagaian dan kualiti alam sekitar dikekalkan bagi menjamin kesihatan, kesejahteraan, keselamatan dan keselesaan hidup rakyat pada masa kini dan pada masa akan datang.

Strategi Jabatan Alam Sekitar adalah seperti berikut:

- ▲ Pembangunan mapan melalui pemuliharaan sumber semulajadi
- ▲ Integrasi pemuliharaan alam sekitar dalam perancangan pembangunan
- ▲ Kawalan dan pencegahan pencemaran
- ▲ Promosi pendidikan dan kesedaran alam sekitar
- ▲ Kerjasama antara agensi dan Persekutuan-Negeri
- ▲ Penyertaan awam dalam pengurusan alam sekitar
- ▲ Kerjasama dan hubungan dua hala, serantau dan antarabangsa

#### **CABARAN MASA DEPAN**

Adalah dijangkakan bahawa Jabatan Alam Sekitar akan menghadapi lebih banyak cabaran di tahun-tahun akan datang. Jabatan perlu mengambil langkah yang lebih inovatif dan merangka strategi yang berorientasikan sasaran. Sungguh pun demikian, alam sekitar yang lebih bersih dan selamat tidak akan

dapat dicapai dengan formulasi polisi dan program sahaja tetapi memerlukan komitmen dan tindakan setiap individu. Oleh, yang demikian, cabaran bagi seluruh rakyat Malaysia ialah seperti petikan ucapan Wawasan 2020 Y.A.B. Dato' Seri Dr. Mahathir Mohamad "...membentuk masyarakat yang bermoral dan beretika dalam ertikata yang sebenar... di mana setiap individu menyakini betapa perlunya bumi kita dipelihara agar tetap produktif dan subur, sumber hutan terus dikekalkan dan berupaya menampung keperluan pembangunan negara".

Jabatan Alam Sekitar akan terus bergerak bagi:-

- ▲ Menilai, menyelaras dan memajukan aktiviti pembangunan dengan kesan paling minima kepada alam sekitar
- ▲ Mengawasi, menguatkuasa dan melaksanakan program dan aktiviti selaras dengan kehendak Akta Kualiti Alam Sekeliling, 1974
- ▲ Bekerja dengan masyarakat antarabangsa dalam menangani isu alam sekitar global
- ▲ Mempromosi kesedaran, pendidikan dan di kalangan semua anggota masyarakat
- ▲ Mengguna teknologi maklumat dalam memperkemas dan memodenkan pentadbiran pejabat dan pengurusan alam sekitar



# CALENDAR *Of* EVENTS

<i>Date</i>	<i>Place</i>	<i>Events</i>
<b>SEPTEMBER</b>		
17-19	<i>Kuala Lumpur</i>	<i>Kursus Penyiasatan dan Penguatkuasaan Pembakaran Terbuka (untuk Jabatan Bomba dan Penyelamat)</i>
17-20	<i>Shah Alam</i>	<i>Kursus Prosedur Penguatkuasaan Pencemaran Marin</i>
20-22	<i>Kuala Lumpur</i>	<i>Kursus Penyiasatan dan Penguatkuasaan Pembakaran Terbuka (untuk Polis DiRaja Malaysia)</i>
27	<i>Putrajaya</i>	<i>Jabatan Alam Sekitar menerima perakuan secara rasmi daripada Unit Pemodenan Tadbiran dan Perancangan Pengurusan Malaysia (MAMPU) untuk Persijilan MS ISO 9002 Perkhidmatan Awam.</i>
30	<i>Kuala Lumpur</i>	<i>Mesyuarat Jawatankuasa Pembangunan Kementerian dan Jawatankuasa Pengurusan</i>
<b>OCTOBER</b>		
5	<i>Kota Kinabalu</i>	<i>17<sup>th</sup> Meeting of ASEAN Senior Officers of Environment (ASOEN) Haze Technical Task Force ASEAN Senior Officials Meeting for the 8<sup>th</sup> AMME</i>
6-7	<i>Kota Kinabalu</i>	<i>8<sup>th</sup> ASEAN Ministerial Meeting on the Environment (AMME)</i>
8-10	<i>Kuantan</i>	<i>Latihan Melawan Tumpahan Minyak Kebangsaan (Oil Combat 2000)</i>
17-18	<i>Kuala Lumpur</i>	<i>Kursus Penyiasatan dan Penguatkuasaan Pembakaran Terbuka (untuk Pihak Berkuasa Tempatan)</i>
20-26	<i>Selangor</i>	<i>Minggu Alam Sekitar Malaysia 2000</i>
25-27	<i>Miri</i>	<i>Kursus Kesedaran Kawalan Tumpahan Minyak dan Pembersihan Pantai Negeri Sarawak</i>