

**THE PREVALENCE OF AIR POLLUTANT INDEX (API) ON SARS-CoV-2 OF  
CORONAVIRUS DISEASE 2019 (COVID-19)**

By:  
MUHAMMAD AZHARI BIN IMRAN  
MATRIC NUMBER  
S48414

SUPERVISOR:  
DR. SAMSURI BIN ABDULLAH

CO-SUPERVISOR  
PROF. DR. MARZUKI BIN HJ ISMAIL

Report submitted in fulfilment of requirement of the acquired data from  
Department of Environment (DOE)

for

Seksyen Data  
Bahagian Udara  
Jabatan Alam Sekitar  
Aras 1- 4, Podium 2 &3  
Wisma Sumber Asli  
No 25, Persiaran Perdana, Precint 4  
62574 PUTRAJAYA

Verified by:



**DR. SAMSURI BIN ABDULLAH**  
Pensyarah  
Fakulti Teknologi Kejuruteraan Kelautan dan Informatik  
Universiti Malaysia Terengganu

## Abstract

Malaysia reported its first COVID-19 case on January 25, 2020, and the cases have continued to grow, necessitating the implementation of additional measures. Hence, determining the factors that responsible for the significant increase in COVID-19 cases is the top priority issue for the government to take necessary action and ultimately restrain this virus before the vaccine availability. Researchers had predicted that air pollution had an indirect relationship with COVID-19 in terms of virus infections. As a result, this study concentrated on the link between the Air Pollutant Index (API) and COVID-19 infections. The initial data set consists of daily confirmed COVID-19 cases in Malaysia and API readings obtained from the Ministry of Health (MOH) and the Department of the Environment (DOE). The results show that Klang (S22) recorded the highest mean of API which at 62.70 while the lowest is at Limbang (S37) (25.37). Next, due to the implementation of Movement Control Order (MCO) in Malaysia and reducing social movement, 27 stations recorded a good level of API compare to the stations that recorded moderate and unhealthy levels. There is positive relationship between API and COVID-19 at each of the region which are North 0.4%( $R^2=0.004$ ), Central 2.1%( $R^2= 0.021$ ), South 0.04% ( $R^2=0.0004$ ), East 1.6%( $R^2=0.016$ ), Sarawak 0.2%( $R^2=0.002$ ), meanwhile Sabah recorded negative correlation at 4.3% ( $R^2=0.043$ ) (To conclude, the API value did not have a strong relationship with the rising number of COVID-19 daily cases.)

## **1. Introduction**

The progression of the disease is correlated with aspects such as older age, smoking habit, and the respiratory and cardiovascular diseases (Zhou et al., 2020). High air pollutants concentration might induce and worsen the COVID-19 cases at certain area (Gupta et al., 2020). The current global spread of SARS-CoV-2 coronavirus (COVID-19) began as a contagious event in the Chinese city of Wuhan in late December 2019 and erupted and was proclaimed a pandemic throughout Europe, the United States of America, and other parts of the world, including Malaysia, by March 2020. The disease was isolated from patients in Wuhan in early 2020 by the scientific community. The genetic sequencing of the new coronavirus has required real-time diagnostic tests to evolve rapidly (Wang et al., 2020).

The first findings found that fever, cough, and myalgia are the most prevalent symptoms at the onset of the illness sputum development, headache and diarrhea were the less frequent symptoms (Cheng et al., 2020; Wang et al., 2020; Sharma et al., 2020). The progression of the condition is associated with conditions such as old age, smoking history, elevated blood pressure, and heart disease (Gautam, 2020; Zhou et al., 2020). The WHO announces the COVID-19 epidemic as a Public Health Emergency of International Concern due to its high degree of infection and its violent history, it has been granted pandemic status. Pneumonia infections transmitted by a novel coronavirus (COVID-19) is an infectious disease, with some similarity to previous infections documented over time such as Severe Acute Respiratory Syndrome (SARS-CoV) that occur on 2002–2003 and Middle East Respiratory Syndrome (MERS-CoV) that spread on 2012–2015 with some variations in its phenotypic and genotypic composition that may affect their pathogenic mechanisms.

Malaysia recorded the first COVID-19 cases on 25th January 2020 (Ministry of Health Malaysia, 2020). Therefore, the number of cases particularly in March 2020 has continued to increase. This rise of COVID-19 disease in Malaysia has called for a few steps to be taken, involve the development of a screening system to rapidly detect cases; cause of the symptoms urgent isolation and comprehensive surveillance of cases, and close contact quarantine for those tested positive for COVID-19. Intending to isolate the origins of the COVID-19 outbreak, the Malaysian Government declared the enforcement of the Movement Control Order (MCO). Human-to-human transmission between close contacts has occurred since mid-December 2019 and has steadily expanded over the upcoming month. On the other hand, optimizing air quality by minimizing both serious and long average concentrations will help protect cities from COVID-19 and reduce pressure on health facilities (Stieb et al., 2020).

Exposure to air pollution had a very well association with heightened threats and severe effects of the spread of disease, including COVID-19, 2009 H1N1, and 1918 Spanish influenza pandemics (Clay et al., 2019; Morales et al., 2017). Exposure to criteria pollutants is known to cause respiratory and various other diseases that make people more vulnerable to infectious diseases close to COVID-19 (Mahnoor et al., 2020). Latest reports have closely linked COVID-19 mortality to long-term exposure to air pollution in the United States (Shoari et al., 2020). Among various controlling factors, environmental factors, especially air pollution play an essential role in the emergence of an influenza virus with pandemic potential. The severity of respiratory problems and lung infection will increase when there is a significant combination of air pollutant concentrations and virus infection at the same time. COVID-19 is a respiratory disease and particulate pollution is strongly linked with respiratory diseases. Air pollution is readily associated with respiratory infections such as chronic obstructive pulmonary disease (COPD). COVID-19 is mainly transmitted by droplets and contact. Aerosol transmission is

possible when people have prolonged exposure to high concentrations of aerosols. Research has demonstrated that respiratory viruses are transmittable among individuals via contacting directly or indirectly, or coarse or small droplets and SARS-CoV-2 is transmittable through direct or indirectly salivary route (To et al., 2020). Wong et al., (2010) denoted that the likelihood of transmitting influenza by aerosols could be reduced by improving ventilation design and prevention of generating aerosols. It is believed that transmitting by aerosols is plausible due to the high risk of cross-infection among physicians, nurses, and personnel (Hoseinzadeh et al., 2017). Another study proved that the SARS-CoV-2 is probably transmitted via aerosols produce during therapeutic actions (Huang et al., 2020). COVID-19 is spread by the airborne route. There are currently few studies that define the pathophysiological characteristics of COVID-19, and there is great uncertainty regarding its mechanism of spread. Current knowledge is largely derived from similar coronaviruses, which are transmitted from human-to-human through respiratory fomites. An epidemiological investigation of 198 early cases in Wuhan revealed that only 22% of patients had direct exposure to the marketplace, 32% were in contact with the suspected cases and 51% had no contact with either of the source (Ali et al., 2020). However, the virus was capable of efficient human-to-human transmission, and similar to MERS, reports of nosocomial propagation were also documented (Ali et al., 2020). This situation necessitated the need for the implementation of measures to abstain from transmissions. Thus, this study is aimed to investigate the association of Air Pollutant Index (API) towards COVID-19 infections in Malaysia.

## **2. Methods**

In Malaysia, the areas that reported COVID-19 were not in line with Air Quality Monitoring Station (AQMS). Thus, the nearest AQMS were taking to investigate the relationship between API with the reported COVID-19 confirmed cases (Table 1).

Table 1. Selected AQMS in line with COVID-19 in Malaysia

Region	State	Label	Stations
North	Perlis	S1	Kangar
	Kedah	S2	Langkawi
	Kedah	S3	Alor Setar
	Kedah	S4	Kulim Hi-Tech
	Pulau Pinang	S5	Seberang Perai
	Perak	S6	Taiping
	Perak	S7	Tasek Ipoh
	Perak	S8	Seri Manjung
	Pahang	S9	Rompin
	Pahang	S10	Temerloh
	Pahang	S11	Jerantut
	Pahang	S12	Balok Baru Kuantan
East	Terengganu	S13	Kemaman
	Terengganu	S14	Kuala Terengganu
	Terengganu	S15	Besut
	Kelantan	S16	Tanah Merah
	Kelantan	S17	Kota Bharu
	Kuala Lumpur	S18	Cheras
Central	Putrajaya	S19	Putrajaya
	Selangor	S20	Kuala Selangor
	Selangor	S21	Petaling Jaya
	Selangor	S22	Klang
	Negeri Sembilan	S23	Seremban
South	Negeri Sembilan	S24	Port Dickson
	Melaka	S25	Alor Gajah

	Melaka	S26	Bandaraya Melaka
	Johor	S27	Segamat
	Johor	S28	Batu Pahat
	Johor	S29	Kluang
	Johor	S30	Larkin
	Johor	S31	Kota Tinggi
	Johor	S32	Tangkak
		S33	Tawau
Sabah		S34	Sandakan
		S35	Kota Kinabalu
		S36	Keningau
		S37	Limbang
		S38	Miri
		S39	Bintulu
		S40	Mukah
Sarawak		S41	Kapit
		S42	Sibu
		S43	Sarikei
		S44	Sri Aman
		S45	Samarahan
		S46	Kuching

---

Data of API have been collected from the Air Pollutant Index Malaysia (available at [http://apims.doe.gov.my/public\\_v2/home.html](http://apims.doe.gov.my/public_v2/home.html)) (DOE, 2021) and Malaysian Department of Environment from 18 March 2020 to 28 February 2021. The status of air quality in Malaysia is displayed on an hourly basis by the Malaysian Department of Environment (DOE) via the Air Pollutant Index (API). There are six criteria pollutants measured, including fine particulate

matter (PM<sub>2.5</sub>), coarse particulate matter (PM<sub>10</sub>), sulphur dioxide (SO<sub>2</sub>), nitrogen dioxide (NO<sub>2</sub>), carbon monoxide (CO), and ground-level ozone (O<sub>3</sub>). Before the execution of API, the sub-index for each criteria pollutants are calculated, and the maximum sub-index is considered as the API, showing the status of air quality at that particular area. The monitoring was under the concession of DOE and Transwater Sdn. Bhd. which covers urban, suburban, industrial, and background stations (Ash'aari et al., 2020). Most of the time, the sub-index of API was dominated by PM<sub>2.5</sub>. Specifically, the PM<sub>2.5</sub> played an important role for Angiotensin-Converting Enzyme 2(ACE2), but in order to represent the overall air quality status, the API is used as a representative for all pollutants. The exposure of high particulate matter will induce ACE2 expressions. ACE2 receptor usually exists at respiratory systems. The full-length protein structure of ACE2 consists of an N-terminal and a C-terminal domain with a single transmembrane helix and an intracellular segment. ACE2 is expressed in different tissues, such as renal, cardiovascular, and gastrointestinal. ACE2 is also present in lung alveolar epithelial cells, enterocytes of the small intestine, arterial and venous endothelial cells, and arterial smooth muscle cells. ACE2 was previously identified as an entry receptor for SARS-CoV and HCoV-NL63. Higher expressions of ACE2 may prolong the virus life cycle, enhance virus replication and mediate penetration of the virus into the host cell. It has been reported that SARS-CoV-2 spike glycoprotein may use ACE2 as a receptor to gain entry into human cells, in a way similar to that of SARS-CoV. COVID-19 daily cases data have been acquired from the website of COVID-19 Malaysia (available at <http://covid-19.moh.gov.my/>) (MOH, 2021) from 18 March 2020 to 28 February 2021. Data in this study had been analyzed to determine the trend of API during the COVID-19 pandemic in Malaysia. These data were then translated into bar graph for clear observation regarding the trend. After getting the trend, the indication of air quality status at study areas is investigated. Descriptive statistics indices were evaluated

(Abdullah et al., 2020), and for the inferential statistics, it aims to correlate the relationship between API and COVID-19 cases using Microsoft Excel Spreadsheet® 2019.

### 3. Results and Discussion

Table 2 summarizes the main statistical index which are minimum, maximum, median, average, standard deviation, variance, skewness, and kurtosis values of API based on AQMS in Malaysia. There are 46 locations of API at all-region in Malaysia that nearest to COVID-19 recorded areas (Figure 1).

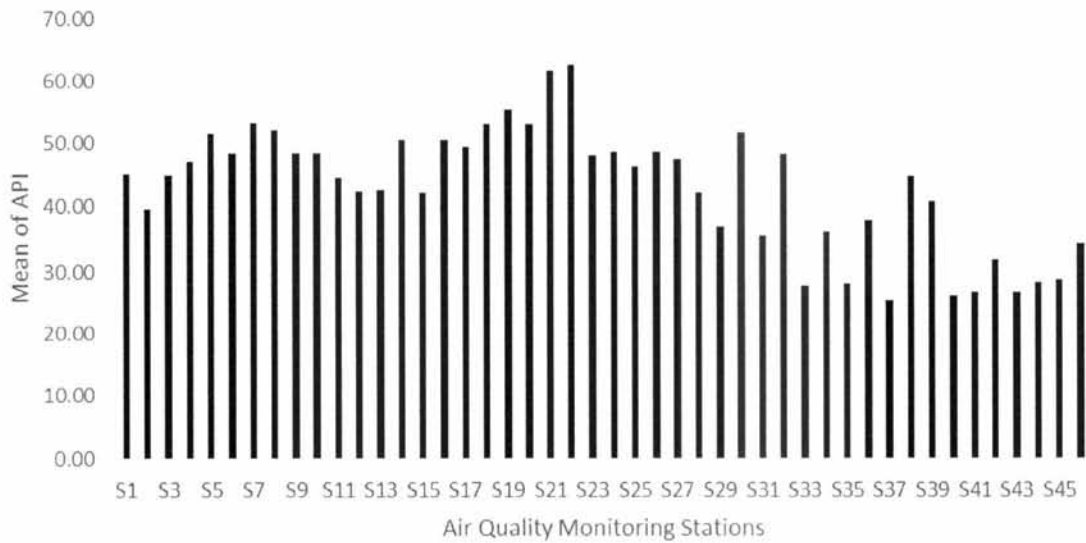


Figure 1. The mean of API at Air Quality Monitoring Stations

Table 2. Descriptive statistic of API based on Air Quality Monitoring Stations

Region	State	Stations	AQMS	Min	Max	Mean	Med	Stdev	Var	Skew	Kurt
	Perlis	S1	Kangar	13	97	44.92	47	13.28	176.24	-0.05	-0.37
	Kedah	S2	Langkawi	2	71	39.49	38	12.99	168.73	0.08	-1.11
	Kedah	S3	Alor Setar	15	96	44.81	47	15.01	225.16	0.12	-0.56
	Kedah	S4	Kulim Hi-Tech	15	79	46.89	51	12.77	163.07	-0.31	-0.75
North	Pulau Pinang	S5	Seberang Perai	20	88	51.35	53	11.50	132.26	-0.30	-0.17
	Perak	S6	Taiping	11	88	48.33	52	13.88	192.56	-0.34	-0.34
	Perak	S7	Tasek Ipoh	21	87	53.06	54	10.57	111.73	-0.42	0.21
	Perak	S8	Seri Manjung	16	97	51.99	53	12.02	144.54	-0.08	0.45
East	Pahang	S9	Rompin	16	135	48.17	45	18.74	351.10	0.70	0.25
	Pahang	S10	Temerloh	10	91	48.29	52	13.21	174.47	-0.63	0.18
	Pahang	S11	Jerantut	8	79	44.33	47	13.87	192.37	-0.20	-0.85
	Pahang	S12	Balok Kuantan Baru	14	139	42.15	42	11.77	138.51	0.10	0.76
Terengganu	Terengganu	S13	Kemaman	12	66	42.40	44	12.03	144.62	-0.51	-0.74
	Terengganu	S14	Kuala Terengganu	12	92	50.43	54	13.96	194.83	-0.54	0.56

Terengganu	S15	Besut	11	78	41.96	43	13.46	181.26	-0.16	-0.78
Kelantan	S16	Tanah Merah	10	98	50.48	53	15.28	233.39	-0.29	0.09
Kelantan	S17	Kota Bharu	11	97	49.28	53	13.43	180.39	-0.41	0.38
Kuala Lumpur	S18	Cheras	21	100	53.00	54	9.04	81.69	-0.74	1.14
Putrajaya	S19	Putrajaya	22	116	55.15	55	9.65	93.09	-0.31	1.90
Selangor	S20	Kuala Selangor	17	85	52.91	54	11.75	138.13	-0.46	0.17
Selangor	S21	Petaling Jaya	27	112	61.70	60	10.87	118.14	0.49	1.04
Selangor	S22	Klang	35	94	62.70	61	8.11	65.74	0.61	0.64
Negeri Sembilan	S23	Seremban	18	87	47.82	51	10.12	102.39	-0.48	-0.09
Negeri Sembilan	S24	Port Dickson	21	124	48.39	51	10.44	108.94	-0.08	0.76
Melaka	S25	Alor Gajah	18	80	46.04	49	12.51	156.58	-0.28	-0.83
Melaka	S26	Bandaraya Melaka	16	101	48.36	51	10.74	115.30	-0.41	-0.31
Johor	S27	Segamat	13	87	47.22	51	11.45	131.20	-0.71	0.13
Johor	S28	Batu Pahat	12	89	42.07	44	13.39	179.17	-0.08	-0.53
Johor	S29	Kluang	8	66	36.79	37	12.34	152.18	-0.08	-0.84
Johor	S30	Larkin	21	101	51.46	53	9.55	91.22	-0.58	1.03
Johor	S31	Kota Tinggi	10	74	35.36	33	11.45	131.06	0.44	-0.62
Johor	S32	Tangkak	21	86	48.09	50	9.82	96.42	0.16	0.93
Sabah	S33	Tawau	10	63	27.77	27	7.25	52.55	0.80	1.81

S34	Sandakan	14	60	35.94	35	8.79	77.22	0.11	-0.56
S35	Kota Kinabalu	9	60	28.06	25	11.95	142.88	0.79	-0.39
S36	Keningau	14	71	37.81	36	11.53	133.02	0.16	-1.13
S37	Limbang	9	60	25.37	23	9.88	97.54	1.22	1.31
S38	Miri	17	90	44.59	47	11.57	133.88	-0.18	-0.57
S39	Bintulu	13	74	40.67	41	12.62	159.29	-0.11	-1.05
S40	Mukah	10	66	26.11	25	9.37	87.71	1.10	1.43
S41	Kapit	9	67	26.68	25	7.81	60.99	1.28	2.61
S42	Sibu	9	87	31.74	29	10.95	119.85	0.96	1.15
S43	Sarikei	12	68	26.73	24	9.53	90.84	1.31	1.64
S44	Sri Aman	8	84	28.32	25	11.33	128.30	1.05	1.16
S45	Samarahan	11	66	28.62	27	10.26	105.30	1.02	0.65
S46	Kuching	13	71	34.37	33	10.97	120.36	0.58	-0.34

Sarawak

Data have skewness ranged from -0.63 to 1.31 and kurtosis ranged -0.85 to 1.90. While for median are ranged from 23 to 61. Lastly, the range for standard deviation and variance are 7.25-18.74 and 52.55 – 351.10, respectively. The ranges of minimum to maximum API value for the North region (S1-S8), are from 2-97 while for the East (S9-S17), are from 8-139. Next, for Central (S18-S22) and South (S23-S32) are 17-116 and 8-124, respectively. Lastly, for Sabah (S33-S36) and Sarawak (S37-46) the range is between 9-71 and 8-90, respectively. In between this study period, Klang (S22) was found to be the most station-dominant air pollutant compared to others. The average API recorded was 62.70 and categorized as moderate according to the New Malaysian Ambient Air Quality Standard (NMAAQS). Since Port Klang is one of the industrial towns with a high volume of heavy vehicles (the monitoring site is also located just beside the main road of Port Klang), PM<sub>10</sub> mass concentrations appear to accumulate in this area (Mohamad et al., 2015). A study by Rahman et al., (2015) stated that air pollution sources in Klang are PM<sub>10</sub>, and might has influence by relative humidity, and atmospheric temperature. This indicates that, in addition to CO and NO<sub>2</sub>, PM<sub>10</sub> was a significant air pollutant in the Klang Valley. The lowest API has been recorded at Limbang (S37) (25.37). Limbang is considered as the background station (rural). The distinct differences in NO<sub>2</sub>, CO, and SO<sub>2</sub> variations revealed different origins for them, e.g., NO<sub>2</sub> is emitted by automobile emissions from a local highway rather than SO<sub>2</sub> and CO<sub>2</sub> produced from residential coal combustion emissions in rural areas (Zhou et al., 2014). A rural area can cause air pollution from the sources of coal combustion on heating activities during the winter season. According to Zhou et al., (2020), the Rural Residential Coal Combustion (RRCC) for heating had a significant effect on air quality, adding 36.1, 9.1, and 16.1 percent of SO<sub>2</sub>, NO<sub>x</sub>, and PM<sub>2.5</sub> to the atmosphere, respectively, in the winter. According to the findings from Qiao et al., (2020), each 1 g/m<sup>3</sup> increase in PM<sub>1</sub>, PM<sub>2.5</sub>, PM<sub>10</sub>, and NO<sub>2</sub> was linked to 14.9%, 14.6%, 7.3%, and

16.5% increased risk of osteoporosis, respectively. Air contamination in China's rural population is thought to be responsible for 20.29 to 24.36% of osteoporosis incidents. In rural areas, during movement control order, average daily PM<sub>2.5</sub> concentrations in the kitchen and living room rose by 17.4 and 5.1 g/m<sup>3</sup>, respectively, which may be attributed to higher fuel consumption for cooking and heating due to greater family sizes than on usual days (Du et al., 2021).

Table 3 shows the percentage level of API in study areas. According to the Malaysian Department of Environment (2021), the API levels between 0 to 50 signified a good level. Good API shows that the study areas contain low pollution and do not impose negative health effects. No restrictions on public outdoor events, and encourages people to live a healthier lifestyle. The API level ranged from 51 to 100, indicating a moderate status. The areas were reported to have moderate emissions and no restrictions on outdoor activities. Finally, during the study, several locations reported an unhealthy level of API (101-200). Elderly, pregnant women, kids, and people with heart and lung problems suggested staying indoor and the government advises high-risk individuals to restrict their recreational behaviors. The good API level in the north area ranges from 30.12% to 70.81%. The highest percentage at Good was 70.81% in Langkawi (S2) (sub-urban), while the lowest percentage was in Tasek Ipoh (S7) (30.12%) (urban). In the East region, Balok Baru Kuantan (S12) (industrial) has the highest percentage (68.41%), while Kuala Terengganu (S11) (urban) has the lowest percentage (34.75%). Kuala Selangor (S20) (rural) had the highest percentage (30.78%) in the central area, while Klang (S22) (sub-urban) had the lowest percentage (2.41%). In the south area, Kota Tinggi (S31) (sub-urban) recorded the highest percentage (83.86%) compared to Larkin (S30) (urban) that has the lowest percentage (32.12%). In Sabah, the percentage varies from 77.10 to 98.82%, with Tawau (S33) (sub-urban) being the most dominant (98.82%) at the good API level. Finally, in Sarawak, the good level of API ranges from 57.10% to 98.48%, with

Kapit(S44) (rural) recording the highest percentages. In the North, the moderate API level ranged from 29.19% to 69.88%. Tasek Ipoh (S7) (urban) has the highest percentage, while Langkawi(S2) (sub-urban) has the lowest. In the East, Balok Baru Kuantan (S12) (Industrial) had the lowest percentage. The levels for central range from 75.09% to 97.59%. Cheras (S18) (urban), Putrajaya (S19) (sub-urban), Kuala Selangor (S20) (rural), Petaling Jaya (S21) (sub-urban), and Klang (S22) (sub-urban) were the study areas in this field. These areas in the region had an API rating of more than 50% at a moderate API level. At South, Larkin (S30) (urban) recorded the highest percentages in this region followed by Bandaraya Melaka (S26) (urban) that recorded 54.58%. Sabah and Sarawak were ranges from 1.18% - 22.9% and 1.52% - 42.9%, respectively. Keningau (S36) (background) and Miri (S38) (sub-urban) are recorded the highest percentages (22.9% & 42.9%) respectively. This study also revealed 0.6% and 0.08% from the east region for unhealthy API level located at Rompin (S9) (rural) and Balok Baru Kuantan (S12) (industrial) respectively. Next, at central region, Putrajaya (S19) (sub-urban) is recorded 0.11% while Petaling Jaya (S21) (sub-urban) recorded 0.17%. Lastly, at South, Port Dickson (S24) (sub-urban) produced 0.05% while Bandaraya Melaka (S26) (urban) and Larkin (S30) (urban) recorded only at 0.01% each.

Table 3. Percentage indication level of API at study areas.

Region	State	Station	AQMS	Good (0 – 50) (%) <b>n = 207080</b>	Moderate (51-100) (%) <b>n = 142271</b>	Unhealthy (101-200) (%) <b>n = 79</b>	Total (%)
North	Perlis	S1	Kangar	56.69	43.31	0	100
	Kedah	S2	Langkawi	70.81	29.19	0	100
		S3	Alor Setar	55.60	44.4	0	100
	Kedah	S4	Kulim Hi-Tech	49.18	50.82	0	100
Pulau Pinang	S5	Seberang Perai	37.08	62.92	0	100	
	Perak	S6	Taiping	44.94	55.06	0	100
Perak	S7	Tasek Ipoh	30.12	69.88	0	100	
Perak	S8	Seri Manjung	35.71	64.29	0	100	
East	Pahang	S9	Rompin	58.80	40.59	0.60	100
	Pahang	S10	Temerloh	41.81	58.19	0	100
	Pahang	S11	Jerantut	56.40	43.60	0	100
	Pahang	S12	Balok Kuantan Baru	68.41	31.51	0.08	100

Terengganu	S13	Kemaman	64.22	35.78	0	100
Terengganu	S14	Kuala Terengganu	34.75	65.25	0	100
Terengganu	S15	Besut	62.90	37.10	0	100
Kelantan	S16	Tanah Merah	38.62	61.38	0	100
Kelantan	S17	Kota Bharu	40.57	59.43	0	100
Central	S18	Cheras	24.91	75.09	0	100
Putrajaya	S19	Putrajaya	20.41	79.48	0.11	100
Selangor	S20	Kuala Selangor	30.78	69.22	0	100
Selangor	S21	Petaling Jaya	7.85	91.98	0.17	100
Selangor	S22	Klang	2.41	97.59	0	100
South	S23	Seremban	47.77	52.23	0	100
Negeri Sembilan	S24	Port Dickson	46.43	53.52	0.05	100
Melaka	S25	Alor Gajah	51.91	48.09	0	100

Melaka	S26	Bandaraya Melaka	45.41	54.58	0.01	100
Johor	S27	Segamat	47.15	52.85	0	100
Johor	S28	Batu Pahat	65.30	34.70	0	100
Johor	S29	Kluang	81.93	18.07	0	100
Johor	S30	Larkin	32.12	67.87	0.01	100
Johor	S31	Kota Tinggi	83.86	16.14	0	100
Johor	S32	Tangkak	52.00	48.00	0	100
Johor	S33	Tawau	98.82	1.18	0	100
Sabah	S34	Sandakan	92.83	7.17	0	100
Sabah	S35	Kota Kinabalu	91.12	8.88	0	100
Sabah	S36	Keningau	77.10	22.90	0	100
Sarawak	S37	Limbang	95.49	4.51	0	100
Sarawak	S38	Miri	57.10	42.9	0	100
Sarawak	S39	Bintulu	67.77	32.23	0	100
Sarawak	S40	Mukah	97.02	2.98	0	100
Sarawak	S41	Kapit	98.48	1.52	0	100

S42	Sibu	90.35	9.65	0	100
S43	Sarikei	95.98	4.02	0	100
S44	Sri Aman	93.94	6.06	0	100
S45	Samarahan	94.12	5.88	0	100
S46	Kuching	88.76	11.24	0	100

---

Figure 2 shows that recorded API at a good level is higher compared to a moderate level. This shows that better air quality is formed during the COVID-19 pandemic. Research from Abdullah et al., (2020) and Othman & Latif (2021) reported that the introduction of MCO greatly decreased human activities, resulting in lower air emissions and improved human health in Malaysia. Other than that, during the COVID-19 lockdown, Mahato et al. (2020) found a 36.84% decline in CO in the megacity of Delhi, which they attribute to closed highways, industrial factories, and power plants. A study by Rahman et al., (2021) stated that PM<sub>2.5</sub>, NO<sub>2</sub>, SO<sub>2</sub>, O<sub>3</sub>, and CO concentrations in Dhaka City decreased by 26%, 20.4%, 17.5%, 9.7%, and 8.8% respectively during the partial and absolute lockdowns, respectively, relative to the time before the lockdown. The introduction of a lockout strategy to contain COVID-19 transmission was critical in lowering pollution levels. During the first partial lockdown, from March 1 to April 21, Baghdad's air quality index (AQI) improved by 13% relative to pre-lockdown levels. NO<sub>2</sub>, PM<sub>2.5</sub>, and PM<sub>10</sub> concentrations in Baghdad decreased by 6%, 8%, and 15%, respectively but O<sub>3</sub> levels increased by 13% during the first partial and absolute lockdowns from March 1 to April 21. NO<sub>2</sub> and PM<sub>2.5</sub> levels fell by 20% and 2.5%, respectively, during the second partial lockout, which lasted from June 14 to July 24 while O<sub>3</sub> and PM<sub>10</sub> levels increased by 525% and 56%, respectively (Hashim et al., 2021). According to Wang et al. (2021), The air quality index (AQI) was decreased by 15.2%, and NO<sub>2</sub>, PM<sub>10</sub>, PM<sub>2.5</sub>, and CO concentrations were reduced by 37.8%, 33.6%, 21.5%, and 20.4%, respectively. We discovered that traffic controls, especially the restriction of intra-city travel intensity (TI), had a major heterogeneous impact on NO<sub>2</sub>, with a reduction of approximately 13.6%, and that any one-unit rise in control measures intensity decreased air pollution concentrations by approximately 2–4%.

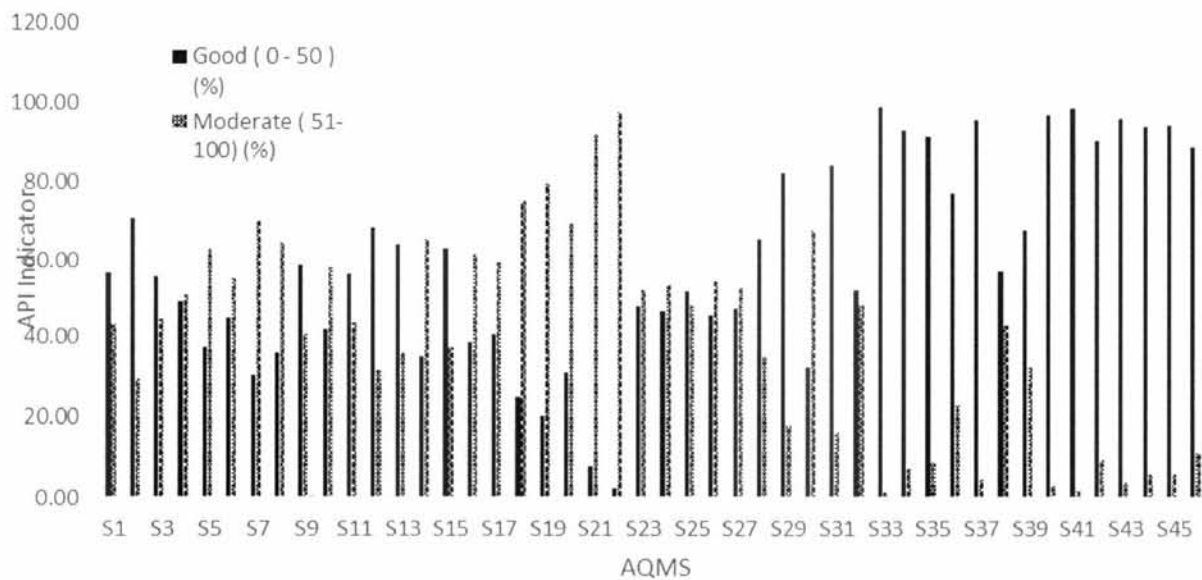


Figure 2. Percentage of API Level at Air Quality Monitoring Stations

According to Table 4 and Figure 3, as the API variable increased by one unit, the number of COVID-19 cases increased by 0.114 in the north. In this region, the  $R^2$  was only 0.4%. The number of COVID-19 cases increased by 1.831 in central areas as the API variable increased by one unit, resulting in a 2% of  $R^2$ . Following that, as the API variable increased by one unit, the COVID-19 cases increased by 0.102, resulting in a 0.04%  $R^2$  in the south area. When the API variable was increased by one unit, the COVID-19 cases increased by 0.062 in the east. This area had an  $R^2$  of 1.5%. Meanwhile, in Sabah, the number of COVID-19 cases decreased by 0.821 as the API value increased by one unit, resulting in a negative relationship with an  $R^2$  of 4%. Finally, as the API value rose by one unit and  $R^2$  was 0.2%, Sarawak recorded a 0.065 rise in COVID-19 cases. Based on the result, it is observed that there is a slight correlation between COVID-19 cases and API due to the exposure from the emission of industrialization activity, vehicle smoke, and road dust. We also can see that the ambient air did not contribute much to the rising of COVID-19 in Malaysia. Li et al., (2021) have also

confirmed that the Air Quality Index (AQI) in China promotes the transmission of COVID-19 cases ( $R^2 = 0.13$  and  $0.223$ ) in Wuhan and XiaoGan. Furthermore, in Milan, Italy, Zoran et al., (2020) have also justified that the COVID-19 new daily cases have positive significant relationship with the air quality index. In Singapore, it is reported that the pollutant standard index is also positively correlated with COVID-19 cases ( $r = 0.35$ ) (Lorenzo et al., 2021). Moreover, several air pollutants concentration are positively correlated with COVID-19 cases in Mexico, which the evaluated correlation values are  $0.77 - 0.80$  (Tello-Leal and Macia-Hernandez, 2020). But, conversely, Sangkham et al., (2021) said that the daily confirmed COVID-19 cases are negatively associated with the air quality index in Bangkok ( $r = 0.458$ ), in line for Sabah region in this study. As advised by the MOH (2021), the community needs to practicing the 3W which are washing the hands using soap and sanitizer, wear the face mask when going outdoor, and warning from the government need to be alerted. Furthermore, the society also needs to avoid the 3C which mean close conversation, crowded place, and confined spaces to avoid the COVID-19 transmission from occurring. These actions had effective towards the society in curbing the COVID-19 spread. The spread of the COVID-19 outbreak is strongly associated with population movements in our culture, which may intensify the spread of novel coronaviruses and pose a serious threat to human life and public health (Wang et al., 2021). The environmental factor like temperature might plays an important role in the survival and transmission of viruses. Unusual temperature variation is an important risk factor for respiratory diseases. Temperature fluctuations can increase the mortality rate and enhanced influenza-related mechanisms. Influenza viruses live lengthier on surfaces or in droplets in cold and dry air, which increases the possibility of succeeding contagion (Hoseinzadeh et al., 2020). Previously, the temperature is a significant factor influencing the infectious diseases such as SARS and influenza. Temperature and its changes affected the SARS outbreak (Lin et al., 2006). Tan et al., (2005) found that the temperature was lower in the 2003 SARS outbreak and

there is an increased risk of daily incidence. A study by Casanova et al., (2010) shows that the SARS-CoV strain of the infection was seen to endure longer on surfaces at a lower temperature. The SARS-CoV day by day rate of cases during the endemic was 18-overlap in lower temperatures contrasted with higher temperatures (Lin et al., 2006). Furthermore, Chan et al., (2011) reported that the reasonability of different sorts of SARS Covids was diminished with high temperatures. Their study likewise recommends that tropical nations have a generally safe of SARS Covid disease as contrasted and moderately chilly nations. Higher temperatures have been shown to be protected against the transmission of the SARS in 2002-2003 (Lin et al., 2006), perhaps because of the diminished endurance of the SARS-CoV on surfaces at higher temperatures (Chan et al., 2011). For MERS-CoV, Gardner et al., (2019) found that it has a negative relationship among temperature and case occurrences for a situation case-crossover investigation. Unfortunately, Altamimi et al., (2019) found that the high temperature was one of the contributors to increased MERS-CoV cases. The speculation is drawn from the inverse relationship between warm temperature and viral infections, including influenza and other coronaviruses like MERS-CoV (Fagbo et al., 2017; Lowen et al., 2007).

Table 4. Summary of linear regression between API and COVID-19

<b>Region</b>	<b>Equation (y = mx + c )</b>	<b>R<sup>2</sup></b>	<b>p-value</b>
North	C19 = 0.114(API) + 2.054	0.004154	p<0.05
Central	C19 = 1.831(API) - 45	0.021279	p<0.05
South	C19 = 0.102(API) + 13	0.000412	p>0.05
East	C19 = 0.062(API) + 0.227	0.015648	p<0.05
Sabah	C19 = -0.821(API) + 71.56	0.043024	p>0.05
Sarawak	C19 = 0.065(API) + 2.22	0.002565	p<0.05

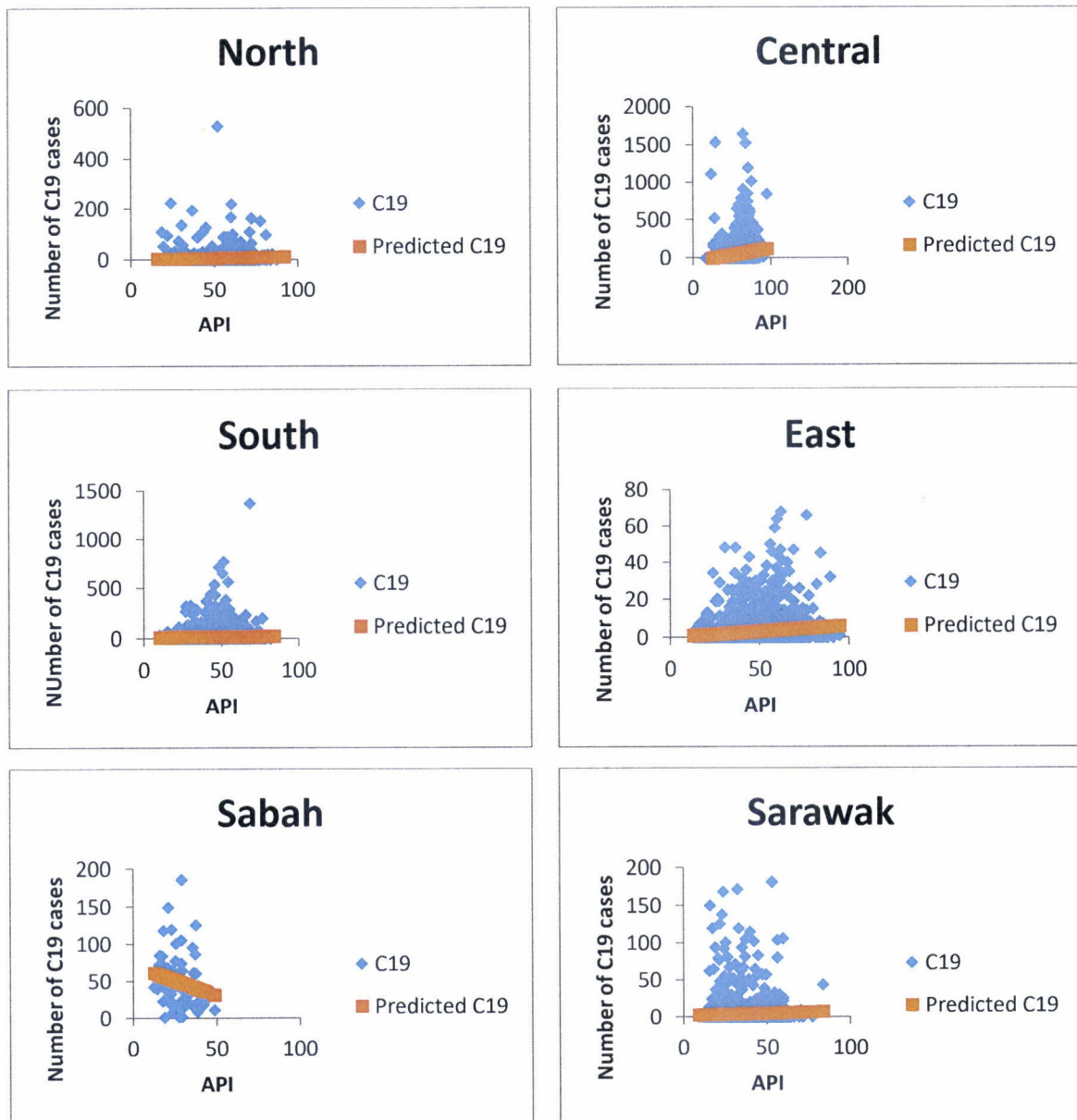


Figure 3. The relationship of API and COVID-19

Prata et al., (2020) examine the role of temperature on the combined number of COVID-19 cases in Brazil. The Generalized Additive Model (GAM) developed to reveal that there is an inverse relationship between temperature and daily cumulative COVID-19 cases. In-depth, they found that on every 1°C increase of temperature, will decrease 4.9% of COVID-19 cases in Brazil. Li et al., (2020) found that the daily temperature ( $R^2 = 0.126$ ,  $p < 0.05$ ) and

daily lowest temperature ( $R^2 = 0.143$ ,  $p < 0.05$ ) were predominantly correlated with COVID-19 incidence, in inverse correlation by using simple linear regression analysis. Moreover, Mandal and Panwar (2020) found that the monthly average environment temperature has a strong negative correlation of total cases ( $r = -0.45$ ), active cases ( $r = -0.42$ ), and cases per million ( $r = -0.50$ ) via Spearman correlation analysis. They added that a chilly climate might be an extra danger factor for COVID-19 cases. In Bangladesh, Haque and Rahman (2020) found that high temperature significantly reduces the transmission of COVID-19. They found the peak spread COVID-19 occurred at an average temperature of 26°C. In a study by Shahzad et al., (2020), the research found that there exists negative correlation between temperature and COVID-19 for several provinces; Guangdong ( $r = -0.3038346$ ,  $p < 0.05$ ), Henan ( $r = -0.5006191$ ,  $p < 0.05$ ), Jiangxi ( $r = -0.5178269$ ,  $p < 0.05$ ), Shandong ( $r = -0.5246733$ ,  $p < 0.05$ ), and Jiangsu ( $r = -0.5211593$ ,  $p < 0.05$ ), while some provinces show positive correlation; Hubei ( $r = 0.5356257$ ,  $p < 0.05$ ), Zhenjiang ( $r = 0.4941642$ ,  $p < 0.05$ ), Hunan ( $r = 0.4372964$ ,  $p < 0.05$ ), Anhui ( $r = 0.5098245$ ,  $p < 0.05$ ), and Heilongjiang ( $r = 0.6612333$ ,  $p < 0.05$ ). Xie and Zhu (2020) also used the GAM to determine the relationship between mean temperature and COVID-19 confirmed cases in China like Prata et al., (2020). Conversely, they found that mean temperature has a positive linear relationship with the number of COVID-19 cases over 122 cities when the temperature is below 3°C. For every 1°C increase is associated with a 4.861% increase in the daily number of COVID-19 confirmed cases. Menebo (2020) found that the maximum temperature ( $r = 0.374$ ,  $p < 0.05$ ) and normal temperature ( $r = 0.293$ ,  $p < 0.05$ ) were positively and significantly correlated with COVID-19. Azuma et al., (2020) revealed that COVID-19 is significantly associated with the increase in daily temperature or sunshine hours. This suggests that an increase in person-to-person contact due to increased outing activities on a warm and/or sunny day might promote the transmission of COVID-19. Interestingly, Runkle et al., (2020) stated that the temperature did not exhibit a strong association with COVID-19 in US cities.

This is corroborated by To et al., (2021), who discovered no correlation between ambient temperature and COVID-19 incidence. The concept that lower or higher temperatures will limit COVID-19 transmission is not fully supported by various data. These contradictory findings regarding the effect of temperature on COVID-19 transmission emphasise the importance of conducting more investigation in a range of geographic areas and over long time periods. MOH (2020) also recorded that until November 2020, there are 119 clusters reported to be workplace-related. Of that number, a total of 36 clusters have been declared ended while another 83 clusters are still active to this day. A total of 77,201 individuals were screened in which a total of 12,079 cases were found to be COVID-19 positive. This involved 4,398 cases of citizens and 7,681 cases were non -citizens. This shows that the infection of COVID-19 is involved in the workplace that specifically in indoor spaces.

#### **4. Conclusion**

This research should ideally serve as a starting point for a better understanding of the factors affecting COVID-19 transmission and spread. Additionally, the findings imply that air quality should be prioritised, since it would help prevent the spread of infectious diseases such as COVID-19. Integrated solutions to avert pandemics comparable to COVID-19 should be developed not just in terms of medicine and wellness, but also in terms of sustainability and environmental science. Characterization of PM<sub>2.5</sub> is ideally a significant step in detecting the presence of SARS-CoV-2 genes in the air as the PM<sub>2.5</sub> has always dominated the API. Additional factors to consider include temperature, traffic volume, industrial activity, and biomass burning. Serious action must be done to halt the spread of COVID-19, with a particular emphasis on the installation of severe lockdowns that can significantly reduce the number of new confirmed cases of COVID-19 on a daily basis.

## Acknowledgements

We would like to express our gratitude to the Air Quality Division of the Malaysian Department of Environment for acquiring air quality data. We are extremely appreciative of the frontliners' efforts during this trying time. We wish all who have been directly impacted by COVID-19 better days ahead.

## References

- Abdullah, S., Mansor, A. A., Napi, N. N. L. M., Mansor, W. N. W., Ahmed, A. N., Ismail, M., & Ramly, Z. T. A. 2020. Air quality status during 2020 Malaysia Movement Control Order (MCO) due to 2019 novel coronavirus (2019-nCoV) pandemic. *Science of the Total Environment*, 729, 139022. <https://doi.org/10.1016/j.scitotenv.2020.139022>
- Abdullah, S., Napi, N.N.L.M., Ahmed, A.N., Mansor, W.N.W., Mansor, A.A., Ismail, M., Abdullah, A.M., and Ramly, Z.T.A. 2020. Development of Multiple Linear Regression for Particulate Matter (PM<sub>10</sub>) Forecasting during Episodic Transboundary Haze Event in Malaysia. *Atmosphere*, 11(3), 289. <https://doi.org/10.3390/atmos11030289>
- Ali, S.A., Baloch, M., Ahmed, N., Ali, A.A. and Iqbal, A. 2020. The outbreak of Coronavirus Disease 2019 (COVID-19)—An emerging global health threat. *Journal of Infection and Public Health*, 13(4), 644-646. <https://doi.org/10.1016/j.jiph.2020.02.033>
- Ali, S.Y., Malik, F., Anjum, M.S., Siddiqui, G.F., Anwar, M.N., Lam, S.S., Nizami, A.S., and Khokhar, M.F. 2021. Exploring the linkage between PM<sub>2.5</sub> levels and COVID-19 spread

- and its implications for socio-economic circles. *Environmental Research*, 193, 110421.  
<https://doi.org/10.1016/j.envres.2020.110421>
- Altamimi, A. and Ahmed, A.E. 2019. Climate factors and incidence of Middle East respiratory syndrome coronavirus. *Journal of Infection and Public Health*, 13(5), 704-708.  
<https://doi.org/10.1016/j.jiph.2019.11.011>
- Ash'aari, Z.H., Aris, A.Z., Ezani, E., Ahmad Kamal, N.I., Jaafar, N., Jahaya, J.N., Manan, S.A. and Umar Saifuddin, M.F. 2020. Spatiotemporal Variations and Contributing Factors of Air Pollutant Concentrations in Malaysia during Movement Control Order due to Pandemic COVID-19. *Aerosol and Air Quality Research*, 20, 2047–2061.  
<https://doi.org/10.4209/aaqr.2020.06.0334>
- Azuma, K., Kagi, N., Kim, H. and Hayashi, M. 2020. Impact of climate and ambient air pollution on the epidemic growth during COVID-19 outbreak in Japan. *Environmental Research*, 190, 110042. <https://doi.org/10.1016/j.envres.2020.110042>
- Casanova, L.M., Jeon, S., Rutala, W.A., Weber, D.J. and Sobsey, M.D. 2010. Effects of air temperature and relative humidity on coronavirus survival on surfaces. *Applied and Environmental Microbiology*, 76(9), 2712-2717.  
<https://doi.org/10.1128/AEM.02291-09>
- Chan, K.H., Peiris, J.S.M., Lam, S.Y., Poon, L.L.M., Yuen, K.Y. and Seto, W.H. 2011. The effects of temperature and relative humidity on the viability of the SARS coronavirus. *Advances in Virology*, 2011, 734690. <https://doi.org/10.1155/2011/734690>
- Cheng, S.C., Chang, Y.C., Chiang, Y.L.F., Chien, Y.C., Cheng, M., Yang, C.H., Huang, C.H. and Hsu, Y.N. 2020. First case of Coronavirus Disease 2019 (COVID-19) pneumonia in Taiwan. *Journal of the Formosan Medical Association*, 119, 747-751.

<https://doi.org/10.1016/j.jfma.2020.02.007>

Clay, K., Lewis, J. and Severnini, E. 2019. What explains cross-city variation in mortality during the 1918 influenza pandemic? Evidence from 438 U.S. cities. *Economics & Human Biology*, 35, 42-59. <https://doi.org/10.1016/j.ehb.2019.03.010>

Department of Environment Malaysia, 2021. Air quality. <https://www.doe.gov.my/portalv1/en/info-umum/kualiti-udara/114> (accessed 4 January 2021)

Du, W., Wang, J., Wang, Z., Lei, Y., Huang, Y., Liu, S., Wu, C., Ge, S., Chen, Y., Bai, K., & Wang, G. 2021. Influence of COVID-19 lockdown overlapping Chinese Spring Festival on household PM<sub>2.5</sub> in rural Chinese homes. *Chemosphere*, 278, 130406. <https://doi.org/10.1016/j.chemosphere.2021.130406>

Fagbo, S.F., Garbati, M.A., Hasan, R., AlShahrani, D., Al-Shehri, M., AlFawaz, T., Hakawi, A., Wani, T.A. and Skakni, L. 2017. Acute viral respiratory infections among children in MERS-endemic Riyadh, Saudi Arabia, 2012-2013. *Journal of Medical Virology*, 89(2), 195-201. <https://doi.org/10.1002/jmv.24632>

Gardner, E.G., Kelton, D., Poljak, Z., Van Kerkhove, M., von Dobschuetz, S. and Greer, A.L. 2019. A case-crossover analysis of the impact of weather on primary cases of Middle East respiratory syndrome. *BMC Infectious Disease*, 19, 113. <https://doi.org/10.1186/s12879-019-3729-5>

Gautam, S. 2020. COVID-19: Air pollution remains low as people stay at home. *Air Quality, Atmosphere, and Health*, 13, 853–857. <https://doi.org/10.1007/s11869-020-00842-6>

Gupta, A., Bherwani, H., Gautam, S., Anjum, S., Musugu, K., Kumar, N., Anshul, A., & Kumar, R. 2020. Air pollution aggravating COVID-19 lethality? Exploration in Asian

cities using statistical models. *Environment, Development and Sustainability*, 0123456789. <https://doi.org/10.1007/s10668-020-00878-9>

Hashim, B. M., Al-Naseri, S. K., Al-Maliki, A., & Al-Ansari, N. 2021. Impact of COVID-19 lockdown on NO<sub>2</sub>, O<sub>3</sub>, PM<sub>2.5</sub> and PM<sub>10</sub> concentrations and assessing air quality changes in Baghdad, Iraq. *Science of the Total Environment*, 754, 141978. <https://doi.org/10.1016/j.scitotenv.2020.141978>

Haque, S.E. and Rahman, M. 2020. Association between temperature, humidity, and COVID-19 outbreaks in Bangladesh. *Environmental Science and Policy*, 114, 253-255. <https://doi.org/10.1016/j.envsci.2020.08.012>

Hoseinzadeh, E., Taha, P., Sepahvand, A. and Sousa, S. 2017. Indoor air fungus bioaerosols and comfort index in day care child centers. *Toxin Reviews*, 36(2), 125-131. <https://doi.org/10.1080/15569543.2016.1274329>

Hoseinzadeh, E., Javan, S., Farzadkia, M., Mohammadi, F., Hossini, H. and Taghavi, M. 2020. An updated min-review on environmental route of the SARS-CoV-2 transmission. *Ecotoxicology and Environmental Safety*, 202, 111015. <https://doi.org/10.1016/j.ecoenv.2020.111015>

Huang, C., Wang, Y., Li, X., Ren, L., Zhao, J., Hu, Y., Zhang, L., Fan, G., Xu, J., Gu, X., Cheng, Z., Yu, T., Xia, J., Wei, Y., Wu, W., Xie, X., Yin, W., Li, H., Liu, M., Xiao, Y., Gao, H., Guo, L., Xie, J., Wang, G., Jiang, R., Gao, Z., Jin, Q., Wang, J. and Cao, B. 2020. Clinical features of patients infected with 2019 novel coronavirus in Wuhan, China. *Lancet*, 395, 497-506. [https://doi.org/10.1016/S0140-6736\(20\)30183-5](https://doi.org/10.1016/S0140-6736(20)30183-5)

Li, H., Xu, X.L., Dai, D.W., Huang, Z.Y., Ma, Z. and Guan, Y.J. 2020. Air pollution and temperature are associated with increased COVID-19 incidence: A time series study.

International Journal of Infectious Disease, 97, 278-282.  
<https://doi.org/10.1016/j.ijid.2020.05.076>

Lin, K., Fong, D.Y.T., Zhu, B. and Karlberg, J. 2006. Environmental factors on the SARS epidemic: Air temperature, passage of time and multiplicative effect of hospital infection. *Epidemiology & Infection*, 134(2), 223-230.  
<https://doi.org/10.1017/S0950268805005054>

Lorenzo, J.S.L., Tam, W.W.S., and Seow, W.J. 2021. Association between air quality, meteorological factors and COVID-19 infection case numbers. *Environmental Research*, 197, 111024. <https://doi.org/10.1016/j.envres.2021.111024>

Lowen, A.C., Mubareka, S., Steel, J. and Palese, P. 2007. Influenza virus transmission is dependent on relative humidity and temperature. *PLoS Pathogens*, 3(10), 1470-1476.  
<https://doi.org/10.1371/journal.ppat.0030151>.

Mahato, S., Pal, S., & Ghosh, K. G. 2020. Effect of lockdown amid COVID-19 pandemic on air quality of the megacity Delhi, India. *Science of The Total Environment*, 730, 139086.  
<https://doi.org/10.1016/j.scitotenv.2020.139086>

Mandal, C.C. and Panwar, M.S. 2020. Can the summer temperatures reduce COVID-19 cases? *Public Health*, 185, 72-79. <https://doi.org/10.1016/j.puhe.2020.05.065>

Menebo, M.M. 2020. Temperature and precipitation associate with Covid-19 new daily cases: A correlation study between weather and Covid-19 pandemic in Oslo, Norway. *Science of the Total Environment*, 737, 139659.  
<https://doi.org/10.1016/j.scitotenv.2020.139659>

Ministry of Health Malaysia, 2020. Latest COVID-19 statistic in Malaysia.  
<http://www.moh.gov.my/index.php/pages/view/2019-ncov-wuhan> (accessed 1 December

2020)

Ministry of Health Malaysia, 2021. Latest COVID-19 statistic in Malaysia.

<http://www.moh.gov.my/index.php/pages/view/2019-ncov-wuhan> (accessed 4 January 2021)

Mohamad, N. D., Ash'aari, Z. H., and Othman, M. 2015. Preliminary Assessment of Air Pollutant Sources Identification at Selected Monitoring Stations in Klang Valley, Malaysia. *Procedia Environmental Sciences*, 30, 121–126.

<https://doi.org/10.1016/j.proenv.2015.10.021>

Morales, K. F., Paget, J., and Spreuwenberg, P. 2017. Possible explanations for why some countries were harder hit by the pandemic influenza virus in 2009 - a global mortality impact modeling study. *BMC Infectious Diseases*, 17, 642.

<https://doi.org/10.1186/s12879-017-2730-0>

Othman M., and Latif M, T. 2021. Air pollution impacts from COVID-19 pandemic control strategies in Malaysia. *Journal of Cleaner Production*, 291, 125992.

<https://doi.org/10.1016/j.jclepro.2021.125992>

Qiao, D., Pan, J., Chen, G., Xiang, H., Tu, R., Zhang, X., Dong, X., Wang, Y., Luo, Z., Tian, H., Mao, Z., Huo, W., Zhang, G., Li, S., Guo, Y., & Wang, C. 2020. Long-term exposure to air pollution might increase prevalence of osteoporosis in Chinese rural population.

*Environmental Research*, 183, 109264. <https://doi.org/10.1016/j.envres.2020.109264>

Prata, D.N., Rodrigues, W. and Bermejo, P.H. 2020. Temperature significantly changes COVID-19 transmission in (sub) tropical cities of Brazil. *Science of the Total Environment*, 729, 138862.

<https://doi.org/10.1016/j.scitotenv.2020.138862>

- Rahman, S.R.A., Ismail, S.N.S., Ramli, M.F., Latif, M.T., Abidin, E.Z., and Praveena, S.M. 2015. The Assessment of Ambient Air Pollution Trend in Klang Valley, Malaysia. *World Environment*, 5(1), 1-11. <https://doi.org/10.5923/j.env.20150501.01>
- Rahman, M.S., Azad, M.A.K., Hasanuzzaman, M., Salam, R., Islam, A.R.M.T., Rahman, M.M., and Hoque, M.M.M. 2021. How air quality and COVID-19 transmission change under different lockdown scenarios? A case from Dhaka city, Bangladesh. *Science of the Total Environment*, 762, 143161. <https://doi.org/10.1016/j.scitotenv.2020.143161>
- Runkle, J.D., Sugg, M.M., Leeper, R.D., Rao, Y., Matthews, J.L. and Rennie, J.J. 2020. Short-term effects of specific humidity and temperature on COVID-19 morbidity in select US cities. *Science of the Total Environment*, 740, 140093. <https://doi.org/10.1016/j.scitotenv.2020.140093>
- Sangkham, S., Thongtip, S., and Vongruang, P. 2021. Influence of air pollution and meteorological factors on the spread of COVID-19 in the Bangkok Metropolitan Region and air quality during the outbreak. *Environmental Research*, 197, 111104. <https://doi.org/10.1016/j.envres.2021.111104>
- Shahzad, F., Shahzad, U., Fareed, Z., Iqbal, N., Hashmi, S.H. and Ahmad, F. 2020. Asymmetric nexus between temperature and COVID-19 in the top ten affected provinces of China: A current application of quantile-on-quantile approach. *Science of the Total Environment*, 736, 139115. <https://doi.org/10.1016/j.scitotenv.2020.139115>
- Sharma, R., Agarwal, M., Gupta, M., Somendra, S., & Saxena, S. K. (2020). Clinical Characteristics and Differential Clinical Diagnosis of Novel Coronavirus Disease 2019 (COVID-19). *Coronavirus Disease 2019 (COVID-19): Epidemiology, Pathogenesis, Diagnosis, and Therapeutics*, 55–70. [https://doi.org/10.1007/978-981-15-4814-7\\_6](https://doi.org/10.1007/978-981-15-4814-7_6)

- Shoari, N., Ezzati, M., Baumgartner, J., Malacarne, D., and Fecht, D. 2020. Accessibility and allocation of public parks and gardens in England and Wales: A COVID-19 social distancing perspective. *PLoS ONE*, 15(10), e0241102. <https://doi.org/10.1371/journal.pone.0241102>
- Stieb, D. M., Evans, G. J., To, T. M., Brook, J. R., & Burnett, R. T. 2020. An ecological analysis of long-term exposure to PM<sub>2.5</sub> and incidence of COVID-19 in Canadian health regions. *Environmental Research*, 191, 110052. <https://doi.org/10.1016/j.envres.2020.110052>
- Tan, J., Mu, L., Huang, J., Yu, S., Chen, B. and Yin, J. 2005. An initial investigation of the association between the SARS outbreak and weather: With the view of the environmental temperature and its variation. *Journal of Epidemiology & Community Health*, 59(3), 186-192. <https://doi.org/10.1136/jech.2004.020180>
- Tello-Leal, E., and Macia-Hernandez, B.A. 2020. Association of environmental and meteorological factors on the spread of COVID-19 in Victoria, Mexico, and air quality during the lockdown. *Environmental Research*, 196, 110442. <https://doi.org/10.1016/j.envres.2020.110442>
- To, K.K.W., Tsang, O.T.W., Yip, C.C.Y., Chan, K.H., Wu, T.C., Chan, J.M.C., Leung, W.S., Chik, T.S.H., Choi, C.Y.C., Kandamby, D.H., Lung, D.C., Tam, A.R., Poon, R.W.S., Fung, A.Y.F., Hung, I.F.N., Cheng, V.C.C., Chan, J.F.W. and Yuen, K.Y. 2020. Consistent detection of 2019 novel coronavirus in saliva. *Clinical Infectious Disease*, 71(15), 841-843. <https://doi.org/10.1093/cid/ciaa149>
- To, T., Zhang, K., Maguire, B., Terebessy, E., Fong, I., Parikh, S. and Zhu, J. 2021. Correlation of ambient temperature and COVID-19 incidence in Canada. *Science of the Total Environment*, 750, 141484. <https://doi.org/10.1016/j.scitotenv.2020.141484>

- Wang, C., Horby, P. W., Hayden, F. G., and Gao, G. F. (2020). A novel coronavirus outbreak of global health concern. *The Lancet*, 395(10223), 470–473. [https://doi.org/10.1016/S0140-6736\(20\)30185-9](https://doi.org/10.1016/S0140-6736(20)30185-9)
- Wang, D., Hu, B., Hu, C., Zhu, F., Liu, X., Zhang, J., Wang, B., Xiang, H., Cheng, Z., Xiong, Y., Zhao, Y., Li, Y., Wang, X. and Peng, Z. 2020. Clinical characteristics of 138 hospitalized patients with 2019 novel coronavirus-infected pneumonia in Wuhan, China. *Journal of the American Medical Association*, 323(11), 1061-1069. <https://doi.org/10.1001/jama.2020.1585>
- Wang, J., Xu, X., Wang, S., He, S., and He, P. 2021. Heterogeneous effects of COVID-19 lockdown measures on air quality in Northern China. *Applied Energy*, 282, 116179. <https://doi.org/10.1016/j.apenergy.2020.116179>
- Wang, Q., Dong, W., Yang, K., Ren, Z., Huang, D., Zhang, P., and Wang, J. 2021. Temporal and spatial analysis of COVID-19 transmission in China and its influencing factors. *International Journal of Infectious Diseases*, 105, 675–685. <https://doi.org/10.1016/j.ijid.2021.03.014>
- Wong, B.C.K., Lee, N., Li, Y., Chan, P.K.S., Qiu, H., Luo, Z., Lai, R.W.M., Ngai, K.L.K., Hui, D.S.C., Choi, K.W. and Yu, I.T.S. 2010. Possible role of aerosol transmission in a hospital outbreak of influenza. *Clinical Infectious Diseases*, 51(10), 1176-1183. <https://doi.org/10.1086/656743>
- Xie, J. and Zhu, Y. 2020. Association between ambient temperature and COVID-19 infection in 122 cities from China. *Science of the Total Environment*, 724, 138201. <https://doi.org/10.1016/j.scitotenv.2020.138201>
- Zhou N, Cui Z, Yang S, Han X, Chen G, Zhou Z, Zhai C, Ma M, Li L, Cai M, Li Y, Ao L, Shu

W, Liu J, Cao J. 2014. Air pollution and decreased semen quality: a comparative study of Chongqing urban and rural areas. *Environ Pollution*, 187, 145-52. <https://doi.org/10.1016/j.envpol.2013.12.030>

Zhou, Y., Zi, T., Lang, J., Huang, D., Wei, P., Chen, D., and Cheng, S. 2020. Impact of rural residential coal combustion on air pollution in Shandong, China. *Chemosphere*, 260, 127517. <https://doi.org/10.1016/j.chemosphere.2020.127517>

Zoran, M.A., Savastru, R.S., Savastru, D.M., and Tautan, M.N. 2020. Assessing the relationship between surface levels of PM<sub>2.5</sub> and PM<sub>10</sub> particulate matter impact on COVID-19 in Milan, Italy. *Science of The Total Environment*, 738, 139825. <https://doi.org/10.1016/j.scitotenv.2020.139825>