

ENVIRONMENTAL IMPACT ASSESSMENT REPORT

EXECUTIVE SUMMARY

THE PROPOSED 303.52 HECTARES (750.01 ACRES) OF FOREST PLANTATION DEVELOPMENT IN PART OF COMPARTMENT 26, PART OF COMPARTMENT 28, PART OF COMPARTMENT 29 AND PART OF COMPARTMENT 35 OF CHINI FOREST RESERVE (TAMBAHAN), MUKIM BERA, DISTRICT OF BERA, PAHANG DARUL MAKMUR BY MEGA MAXJAYA RESOURCES.



PROJECT PROPONENT

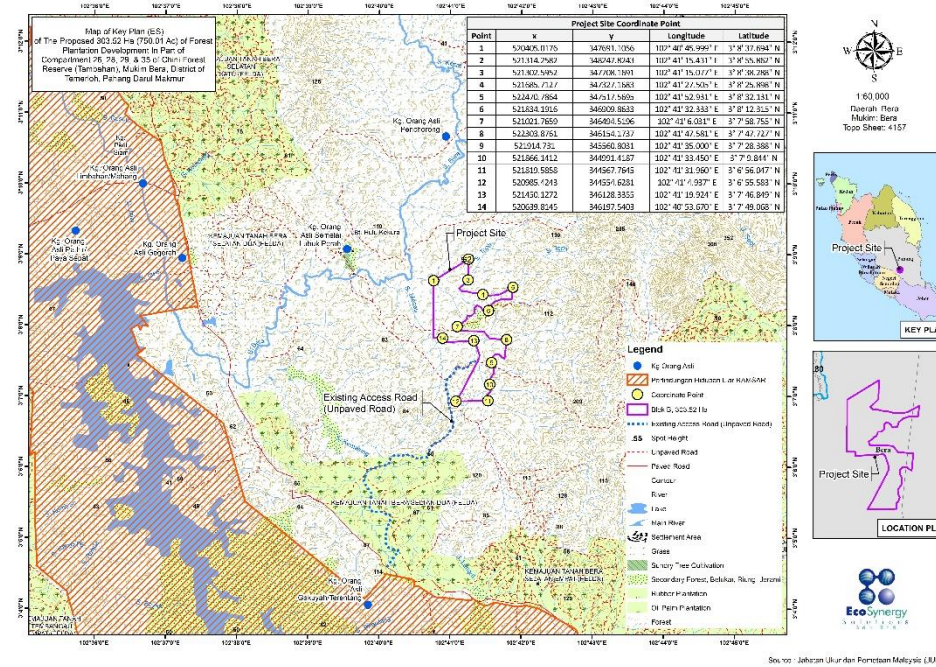
MEGA MAXJAYA RESOURCES



EIA CONSULTANT

ECO SYNERGY SOLUTIONS SDN BHD

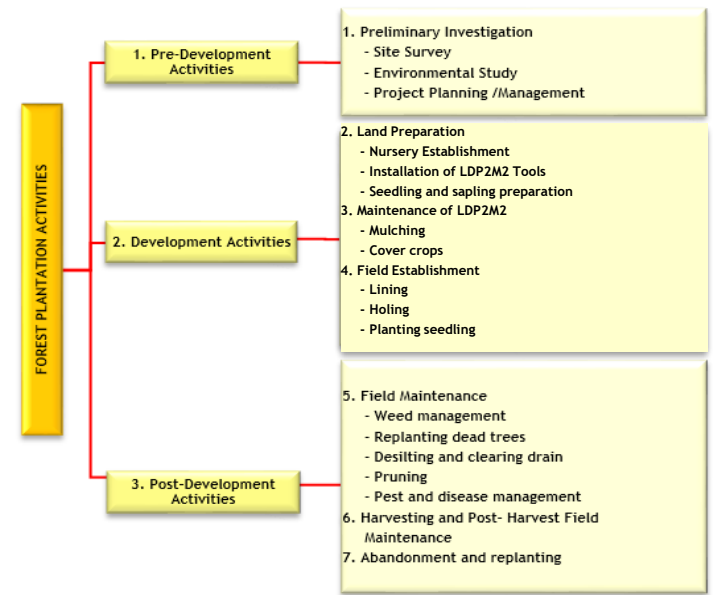
PROJECT LOCATION



LEGAL REQUIREMENT

Subject to Section 34A(1) of the Environmental Quality Act 1974 [127] and Environmental Quality (Prescribed Activities) (Environmental Impact Assessment) Order 2015, the project site fall under **First Schedule**;

"Activity 5(e) Forestry: Development of planted forest covering an area of 100 hectares or more but less than 500 hectares"



PERFORMANCE MONITORING (PM)

LD-P2M2 Tools	Parameters	Recommended
Sediment Basin/Trap	Silt Marker	2/3 depth from sediment trap After rain event (in-situ)
Perimeter Drain	Performance	Subjected to CoA
Earth Drain with Check Dam	Sediment Level	
Temporary or permanent waterway crossing (culvert/bridge)	Structure and Performance	

COMPLIANCE MONITORING (CM)

Component	Standard	Frequency
Noise (LAeq)	Day 60 dBA, Night 55 dBA	Subjected to CoA
Water Quality	50 mg/L TSS, 250 NTU	After 12.5 mm rainfall (using rain gauge)
Air Quality	Pm10 - 100 µg/m³, Pm2.5 - 35 µg/m³	Subjected to CoA

IMPACT MONITORING (IM)

Impact	Parameter	Limit	Standards	Frequency
Air Quality Level	PM ₁₀	100 µg/m³	Malaysia Ambient Air Quality Standard 2020	Subjected to CoA
Noise Quality Level	LAeq, Lmax, Lmin	Day 55 dBA, Night 50dBA	Guidelines for Environmental Noise Limits and Control, 2019	Subjected to CoA
Water Quality Level	TSS, BOD, pH, Turbidity, DO, COD	50 mg/L, 3 mg/L, 6.0~9.0, 250 NTU, 5~7 mg/L, 25 mg/L	National Water Quality Standard (NWQS)	Subjected to CoA

01

The Project site is located in part of compartment 26, 28, 29, and 35 of Chini Forest Reserve (Tambahan) in Mukim Bera, District of Bera, Pahang Darul Makmur

02

The nearest town is Bera Town which is approximately ±29.24 km from the project site boundary

03

The Project will develop a Forest Plantation Development covering an area of about 303.52 hectares

04

The nearest settlement area which are Kampung Orang Asli (KOA) Semelai Lubuk Perah, KOA Penchorong, KOA Gakuyah/ Terentang, KOA Gegereh, KOA Limbahan/ Mahang, and KOA Pathir/ Paya Sapet located approximately 2.40 km, 3.24 km, 5.77 km, 6.57 km, 7.98 km and 9.40 km from the project site.

ACCESS ROAD

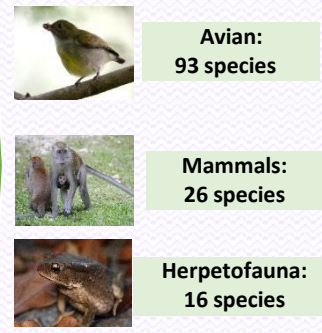
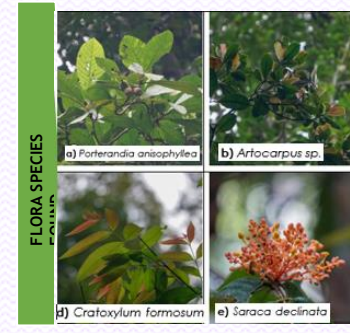


The project site can be accessed by traversing from Bera town by using Route 10 for about 1.70 km and turn right to Jalan Utama Bera and going straight for about 17.8 km. Then, turn right onto Jalan Sebertak – Bera Selatan and continue straight along the route for about 22.70 km. Turn left and continue straight for 8.63km of proposed access to reach the project site

POTENTIAL IMPACTS AND MITIGATION MEASURES

SIGNIFICANT POTENTIAL IMPACTS	MITIGATION MEASURES
1) Soil erosion and sedimentation 2) Reduce river depth/drain capacity 3) Declining water quality level	<ul style="list-style-type: none"> Scheduling of the development. Plant cover crop. Prepare silt trap, and sediment basin. Retain buffer zone.
Waste Generation a) Biomass waste b) Solid waste c) Scheduled waste	<ul style="list-style-type: none"> No open burning. Apply air curtain burner. Provide garbage bins. Composting waste approach. Proper storage area.
1) Habitat-Fragmentation. 2) Human-wildlife Conflict	<ul style="list-style-type: none"> Phasing/Directional clearing. Wildlife-Human conflict management strategies. Report incident. Prohibition of wildlife poaching Signage on prohibition of wildlife hunting or trapping.
Declining Air Quality Level	<ul style="list-style-type: none"> Spraying water on road (water bowser) Provide wash through Apply crusher run for unsealed road
Noise Pollution	<ul style="list-style-type: none"> Use quieter and/or silence machineries. Use proper personal protection equipment (PPE) on site with ear plug. Regularly servicing and maintaining vehicles and machineries
Nuisance During Project Abandonment	<ul style="list-style-type: none"> Preparing Project Abandonment Plan. Warning signage to be installed. Removes vehicles involved in the project development. Initiate environmental control measures. Regular inspections on site.

EXISTING CONDITIONS



EXISTING ENVIRONMENT

NOISE LEVEL RESULT

Station	Time	Result
N1	Daytime	51.8
	Nighttime	51.3
N2	Daytime	58.7
	Nighttime	60.7
N3	Daytime	54.1
	Nighttime	49.3

AIR QUALITY RESULT (PM10)

Station	PM 10	PM 2.5
A1	16.72	10.23
A2	23.29	14.24
A3	24.82	20.50
A4	35.0	16.0

Station	WQI	Class	Status
WQ1	90.00	II	Clean
WQ2	90.80	II	Clean
WQ3	90.80	II	Clean
WQ4	87.13	II	Clean
WQ5	87.73	II	Clean
WQ6	88.44	II	Clean
WQ7	87.86	II	Clean
WQ8	86.14	II	Clean
WQ9	86.68	II	Clean
WQ10	88.09	II	Clean
WQ11	88.34	II	Clean
WQ12	85.50	II	Clean
WQ13	86.50	II	Clean
WQ14	85.23	II	Clean
WQ15	83.29	II	Clean

LAPORAN PENILAIAN KESAN KEPADA ALAM SEKELILING



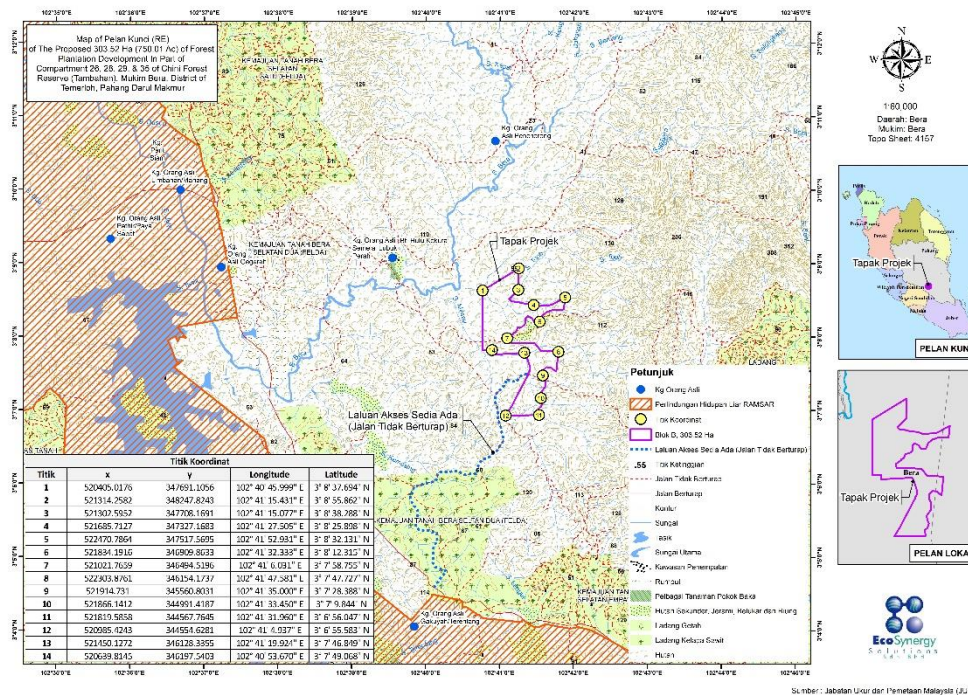
PENGERAKA PROJEK

MEGA MAXJAYA RESOURCES

PERUNDING EIA

ECO SYNERGY SOLUTIONS SDN BHD

LOKASI PROJEK



RINGKASAN EKSEKUTIF

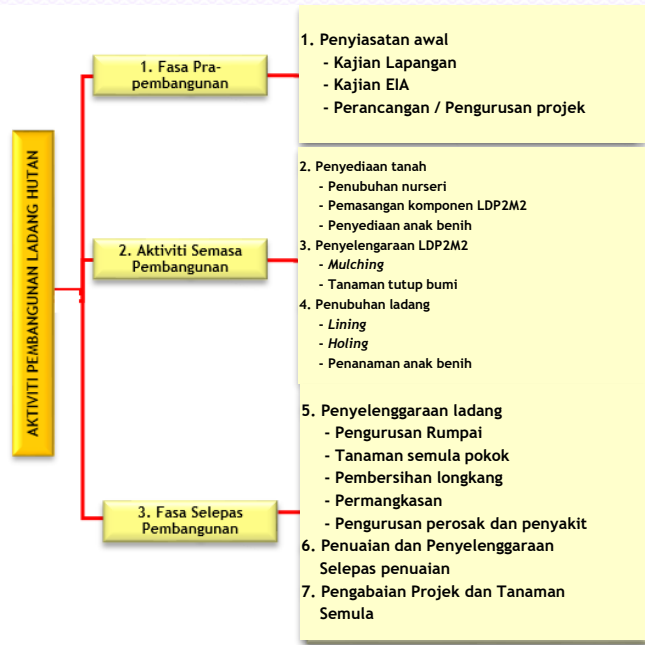
CADANGAN PEMBANGUNAN LADANG HUTAN 303.52 HEKTAR (750.01 EKAR) DI SEBAHAGIAN KOMPARTMEN 26, SEBAHAGIAN KOMPARTMEN 28, SEBAHAGIAN KOMPARTMEN 29 DAN SEBAHAGIAN KOMPARTMEN 35 HUTAN SIMPANAN CHINI (TAMBAH BERAMBAHAN), MUKIM OF MEGA MAXJAYA RESOURCES



HURAIAN PROJEK

- 01 Tapak projek terletak di Sebahagian Kompartmen 26, 28, 29 dan 35 di Hutan Simpan Chini (Tambahan), Mukim Bera, Daerah Bera, Pahang Darul Makmur.
- 02 Bandar terdekat ialah Bandar Bera lebih kurang 29.24km dari tapak projek
- 03 Cadangan projek adalah pembangunan ladang hutan seluas 303.52 hektar.
- 04 Kawasan penempatan terdekat ialah Kampung Orang Asli (KOA) Semelai Lubuk Perah, KOA Penchorong, KOA Gakuyah/ Terentang, KOA Gegereh, KOA Limbahah/ Mahang, and KOA Pathir/ Paya Sapet terletak kira-kira 2.40 km, 3.24 km, 5.77 km, 6.57 km, 7.98 km dan 9.40 km dari sempadan tapak projek.

"Aktiviti 5(e) Perhutanan: Pembangunan ladang hutan yang meliputi kawasan seluas 100 hektar atau lebih tetapi kurang daripada 500 hektar."



PEMANTAUAN PRESTASI (PM)

Komponen LD-P2M2	Parameter	Syor
Perangkap Kelodak/Kolam Perangkap Mendapan	Penanda Aras Mendapan Kelodak	2/3 kedalaman perangkap kelodak
Parit Perimeter	Prestasi	Selepas hujan (in-situ)
Parit tanah berserta Check Dam	Aras Mendapan	Mengikut syarat kelulusan
Laluan lintasan air sementara atau kekal (pembetung/jambatan)	Struktur & Prestasi	

PEMANTAUAN PEMATUHAN (CM)

Komponen	Piawaian	Kekerapan
Bunyi(LAeq)	Siang 60 dBA, Malam 55 dBA	Mengikut syarat kelulusan
Kualiti Air	50 mg/L	
Jumlah Pepejal Terampai	250 NTU	Mengikut syarat kelulusan
Kekeruhan		
Kualiti Udara	Pm10 - 100 µg/m ³ , Pm2.5 - 35 µg/m ³	Mengikut syarat kelulusan

PEMANTAUAN IMPAK (IM)

Impak	Parameter	Had	Piawaian	Kekerapan
Tahap Kualiti Udara	PM ₁₀	100 µg/m ³	Malaysia Ambient Air Quality Standard 2020	Mengikut syarat kelulusan
Tahap Kualiti Bunyi	LAeq, Lmax, Lmin	Siang 55 dBA, Malam 50dBA	Guidelines for Environmental Noise Limits and Control, 2019	Mengikut syarat kelulusan
Tahap Kualiti Air	TSS, BOD, pH, Turbidity, DO, COD	50 mg/L, 3 mg/L, 6.0~9.0, 250 NTU, 5~7 mg/L, 25 mg/L	National Water Quality Standard (NWQS)	Mengikut syarat kelulusan

LALUAN AKSES



Kawasan tapak projek boleh diakses dari Bandar Bera melalui Route 10 sejauh ±1.7 km dan belok kanan ke Jalan Utama Bera serta jalan lurus sejauh 17.8 km. Kemudian, belok kanan ke Jalan Sebertak – Bera Selatan dan jalan lurus sejauh 22.70 km. Belok kiri dan jalan lurus sejauh 8.63km jalan akses untuk sampai ke tapak projek

IMPAK KETARA DAN LANGKAH KAWALAN

IMPAK KETARA	LANGKAH KAWALAN
1) Hakisan dan Pemendapan Tanah	Penjadualan pembangunan, Tanaman tutup bumi
2) Mengurangkan Kedalaman Sungai dan Kapasiti Parit	Sediakan perangkap kelodak dan kolam perangkap mendapan
3) Menurunkan Tahap Kualiti Air	Kekalkan zon penampungan
Penjanaan Sisa	Larangan pembakaran terbuka
a) Sisa biojisim	Menyediakan tong sampah
b) Sisa pepejal	Pendekatan pengkomposan sisa
c) Buangan terjadual	Sediakan tempat penyimpanan yang selamat
1) Pemecahan habitat	Pembangunan berfasa dan terarah
2) Konflik Manusia-Hidupan Liar	Pengurusan strategi konflik manusia-hidupan liar, Laporan sebarang kejadian, Larangan pemburuan haram, Papan tanda larangan buru atau perangkap hidupan liar
Penurunan Tahap Kualiti Udara	Menyembur air di atas jalan, Letakkan crusher run pada jalan tidak berturap
Pencemaran bunyi	Penggunaan mesin senyap, Penggunaan Personal Protection Equipment (PPE) di tapak projek, Kekerapan penyelenggaraan mesin.
Kacau Ganggu Ketika Pengabaian Projek	Sediakan Pelan Pengabaian Projek, Pasang papan tanda amaran, Alihkan semua kenderaan di dalam tapak Projek, Mulakan langkah kawalan persekitaran, Pemeriksaan yang kerap

KAWASAN PERSEKITARAN TAPAK PROJEK



- Burung: 93 spesies
- Mamalia: 26 spesies
- Amphibia / Reptilia: 16 spesies

PERSEKITARAN SEDIA ADA

KUALITI BUNYI			Stesen	WQI	Kelas	Status	
N1	Siang	51.8	WQ1	90.00	II	Bersih	
	Malam	51.3	WQ2	90.80	II	Bersih	
N2	Siang	58.7	WQ3	90.80	II	Bersih	
	Malam	60.7	WQ4	87.13	II	Bersih	
N3	Siang	54.1	WQ5	87.73	II	Bersih	
	Malam	49.3	WQ6	88.44	II	Bersih	
KUALITI UDARA	PM 10	PM 2.5	WQ7	87.86	II	Bersih	
			WQ8	86.14	II	Bersih	
			WQ9	86.68	II	Bersih	
	A1	16.72	10.23	WQ10	88.09	II	Bersih
	A2	23.29	14.24	WQ11	88.34	II	Bersih
	A3	24.82	20.50	WQ12	85.50	II	Bersih
	A4	35.0	16.0	WQ13	86.50	II	Bersih
				WQ14	85.23	II	Bersih
				WQ15	83.29	II	Bersih