





# 04

## Project Description

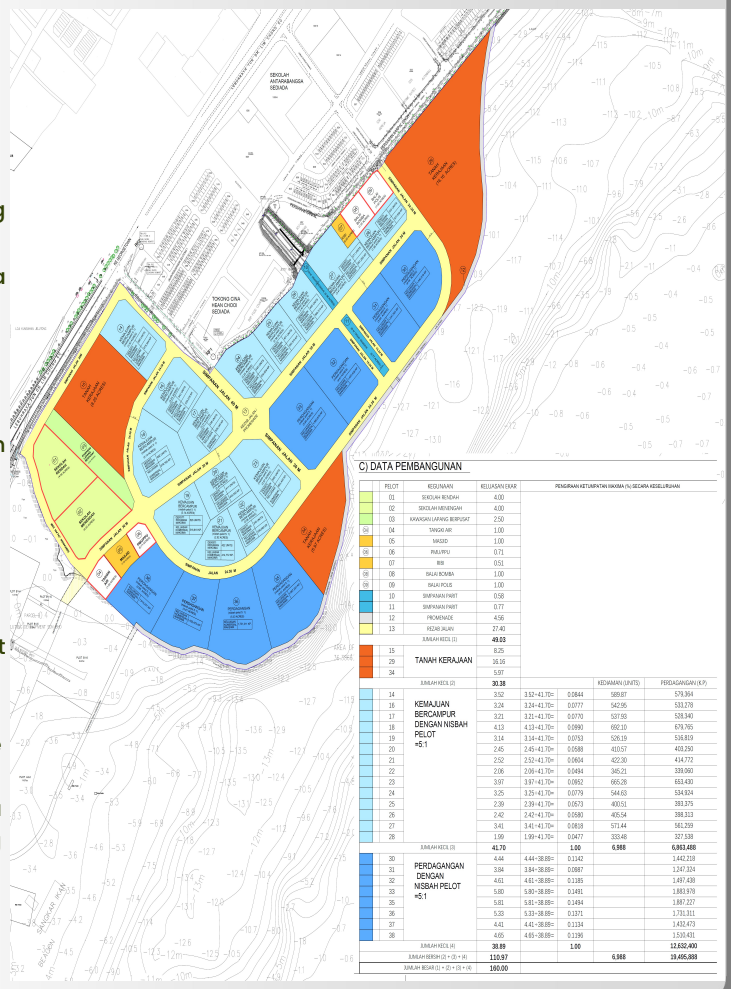
**Land Area For Development**  
 Proposed Rehabilitation Of Jelutong Landfill – 36.20 ha (89.44 acres)  
 Proposed Reclamation Land – 28.55 ha (70.56 acres)  
 Total Area – 64.75 ha (160 acres)

**Type of Development**  
 Rehabilitation And Land Reclamation Works

**Population Equivalent (PE)**  
 86,562 PE

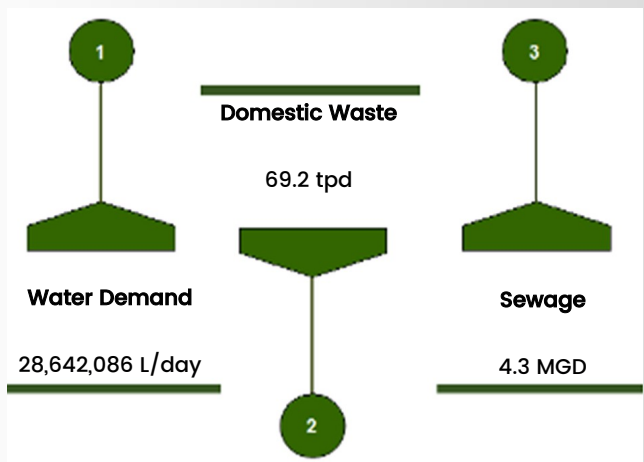
Generally the Proposed Project comprise of:-

- Rehabilitation and development of the existing Jelutong Landfill
- Reclamation and development of a new landmass adjacent to the Jelutong Landfill; and
- Construction of the entire infrastructure for the reclaimed land.



# 05

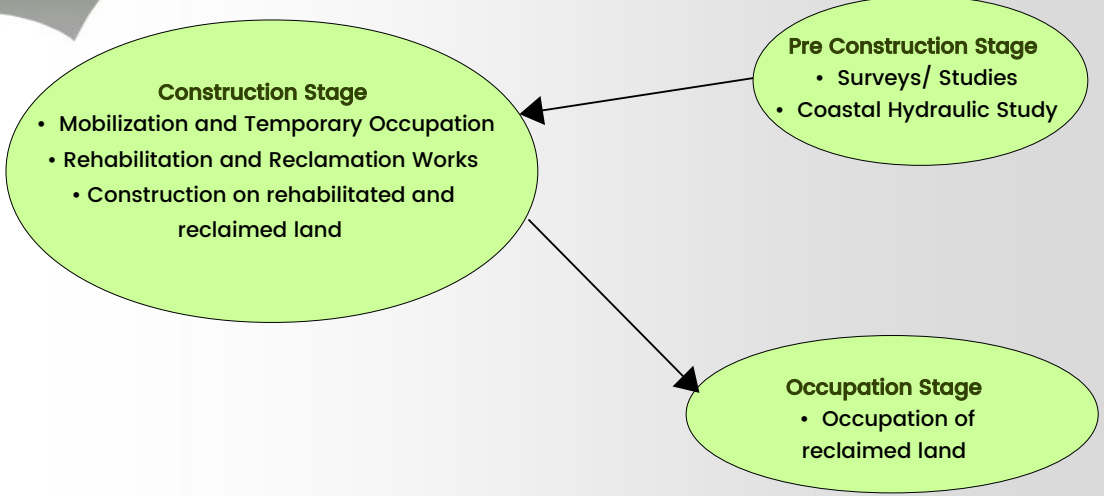
## Utility Demand And Waste Generation





# 06

## Project Activities



# 07

## Existing Environment



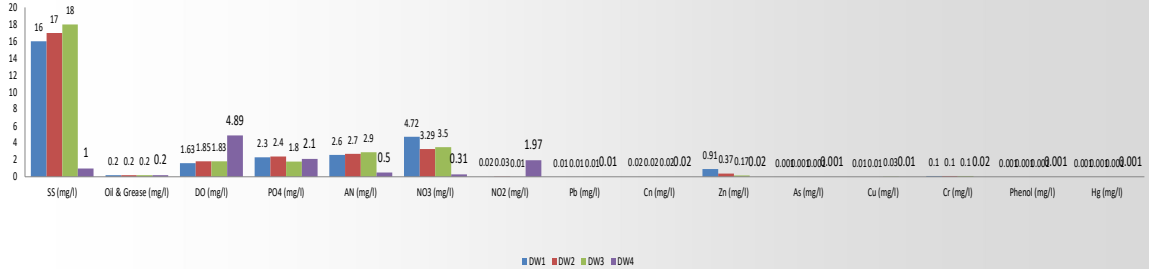


# 08

## Existing Environment

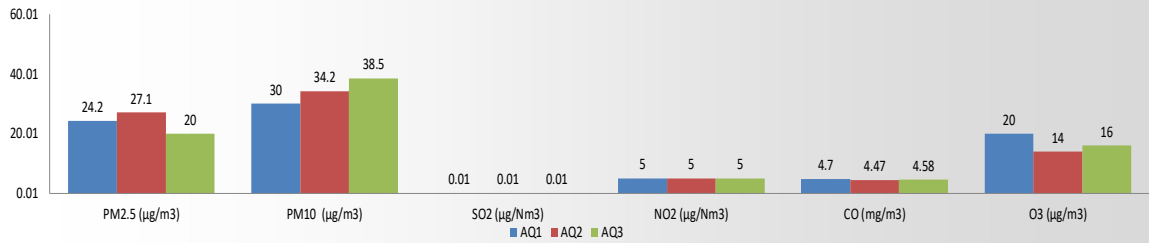
### Drain Water Quality

- DW1 – At upstream of drain adjacent to existing land mass
- DW2 – At downstream of drain adjacent to existing land mass
- DW3 – At downstream of drain adjacent to existing land mass
- DW4 – At upstream of drain adjacent to existing landmass in north of project site



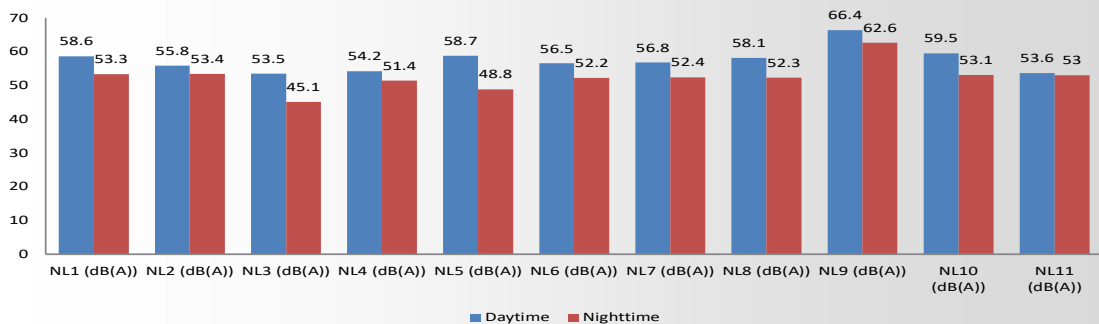
### Air Quality

- AQ1 – At Mutiara Idaman 1
- AQ2 – At Persiaran Karpal Singh
- AQ3 – At Persiaran Karpal Singh in the east



### Noise Levels

- NL1 – At Mutiara Idaman 1
- NL2 – At Persiaran Karpal Singh
- NL3 – At Persiaran Karpal Singh in the east
- NL4 – The Maritime
- NL5 – The Spring Condominium
- NL6 – Wesley Methodist School Penang International
- NL7 – Desa Pinang Apartment
- NL8 – Masjid Albukhary Bandar Baru Sungai Pinang
- NL9 – Pinang Court
- NL10 – The Ocean View
- NL11 – Hean Chooi Temple





# 09

## Impact And Mitigation Measures

### During Construction

<u>Impacts</u>	<u>Mitigation Measures</u>
<ul style="list-style-type: none"> <li>● Impacts of gaseous emissions at landfill site;</li> <li>● Impacts of leachate at landfill site;</li> <li>● Impacts due to changes in hydraulic and hydrodynamics;</li> <li>● Impacts on marine resources; and</li> <li>● Impacts due to heavier marine traffic.</li> </ul>	<ul style="list-style-type: none"> <li>● All residual gases to be captured and flared off at site;</li> <li>● Leachate to be collected for offsite treatment;</li> <li>● All workers at the rehabilitation site use PPE;</li> <li>● Silt curtains to be installed to prevent sediment prior entering the sea;</li> <li>● Adequate signages and movement of vessels during reclamation works to be monitored;</li> <li>● Recommendations outlined by geotechnical engineers shall be followed accordingly; and</li> <li>● Strict monitoring and control throughout implementation of Proposed Project.</li> </ul>

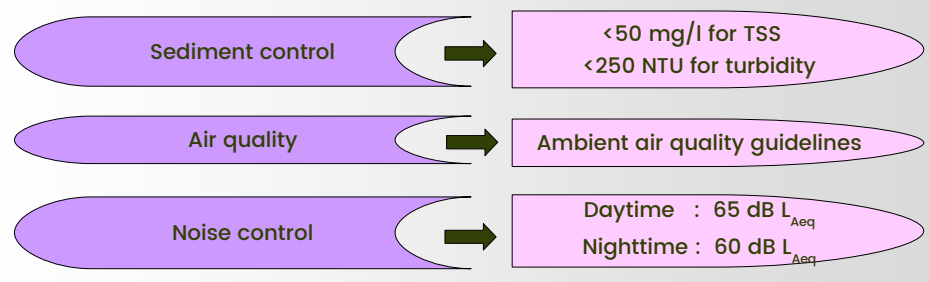
### During Operation

<u>Impacts</u>	<u>Mitigation Measures</u>
<ul style="list-style-type: none"> <li>● Impact from the discharge of sewage;</li> <li>● Impact from domestic solid waste and scheduled waste generation;</li> <li>● Impact on air quality due to increase traffic; and</li> <li>● Impact of increased traffic volume.</li> </ul>	<ul style="list-style-type: none"> <li>● Collect and convey sewage to existing regional sewage treatment plant in Jelutong according to IWK's requirement;</li> <li>● Domestic solid waste regularly collected and dispose;</li> <li>● Good landscaping with adequate tree planting; and</li> <li>● Good traffic dispersal system.</li> </ul>

# 10

## Environmental Monitoring

### Proposed Performance Monitoring At Construction Stage

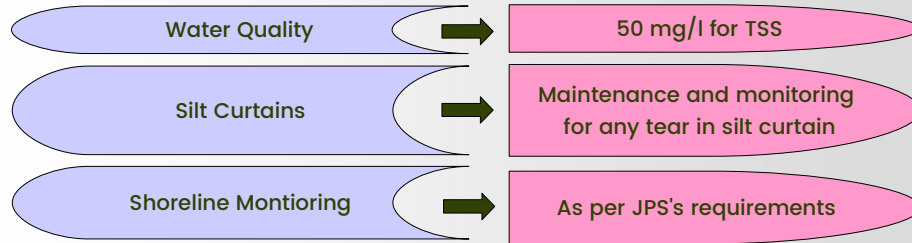




10

### Environmental Monitoring (Continue)

#### Proposed Compliance Monitoring Program At Rehabilitation And Reclamation Woks



#### Proposed Impact Monitoring Program During Rehabilitation And Reclamation Works

